

ITGB1 RABBIT PAB

货号: S216588

产品全名: ITGB1 兔多抗

基因符号 CD29; FN1; FN2; FN3; FN4; FN5; FN6; FN7; FN8; FN9; FN10; FN11; FN12; FN13; FN14; FN15; FN16; FN17; FN18; FN19; FN20; FN21; FN22; FN23; FN24; FN25; FN26; FN27; FN28; FN29; FN30; FN31; FN32; FN33; FN34; FN35; FN36; FN37; FN38; FN39; FN40; FN41; FN42; FN43; FN44; FN45; FN46; FN47; FN48; FN49; FN50; FN51; FN52; FN53; FN54; FN55; FN56; FN57; FN58; FN59; FN60; FN61; FN62; FN63; FN64; FN65; FN66; FN67; FN68; FN69; FN70; FN71; FN72; FN73; FN74; FN75; FN76; FN77; FN78; FN79; FN80; FN81; FN82; FN83; FN84; FN85; FN86; FN87; FN88; FN89; FN90; FN91; FN92; FN93; FN94; FN95; FN96; FN97; FN98; FN99; FN100

UNIPROT ID: P05556 (Gene Accession - BC020057)

背景: Integrins are heterodimeric proteins made up of alpha and beta subunits. At least 18 alpha and 8 beta subunits have been described in mammals. Integrin family members are membrane receptors involved in cell adhesion and recognition in a variety of processes including embryogenesis, hemostasis, tissue repair, immune response and metastatic diffusion of tumor cells. This gene encodes a beta subunit. Multiple alternatively spliced transcript variants which encode different protein isoforms have been found for this gene.

抗原: Fusion protein of human ITGB1

经过测试的应用: ELISA, WB, IHC

推荐稀释比: IHC: 50-200; WB: 500-2000; ELISA: 1000-5000

种属反应性: Rabbit

克隆性: Rabbit Polyclonal

亚型: Immunogen-specific rabbit IgG

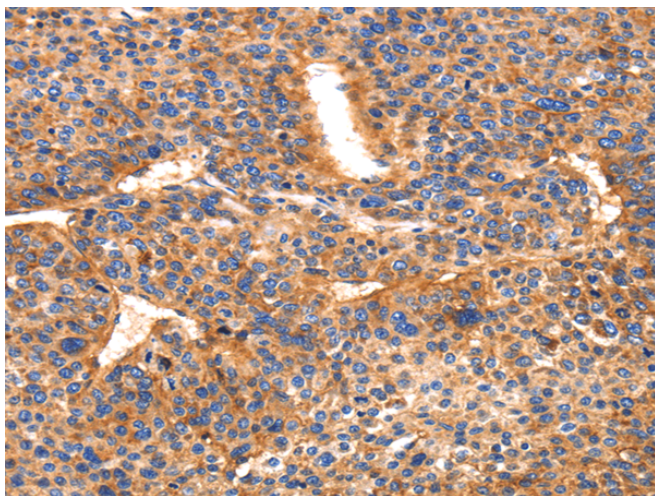
纯化: Antigen affinity purification

种属反应性: Human, Mouse, Rat

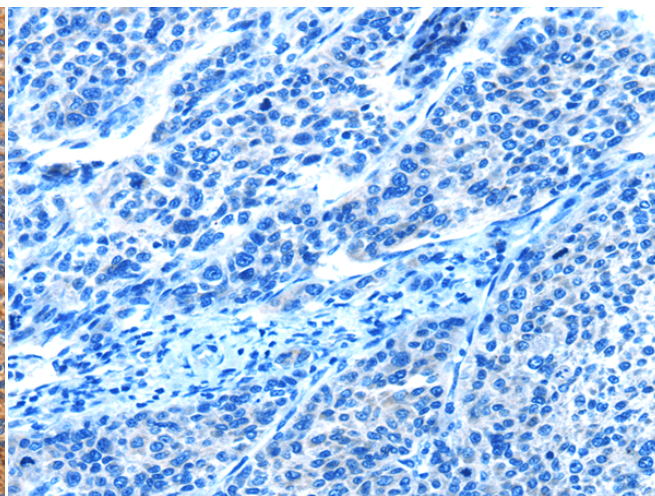
成分: PBS (without Mg²⁺ and Ca²⁺), pH 7.4, 150 mM NaCl, 0.05% Sodium Azide and 40% glycerol

研究领域: Signal Transduction

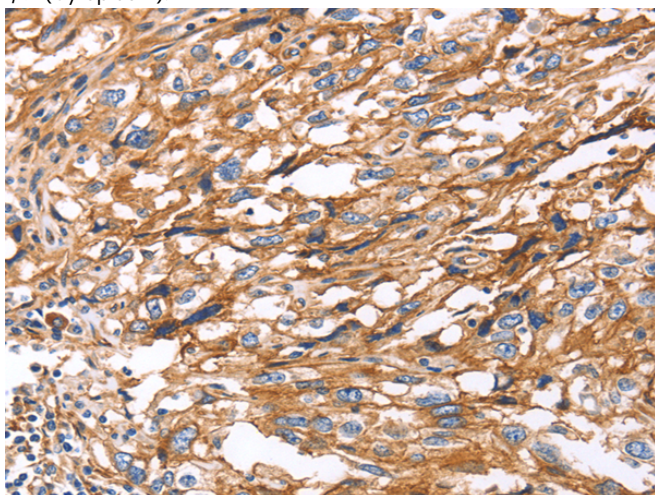
储存和运输: Store at -20°C. Avoid repeated freezing and thawing



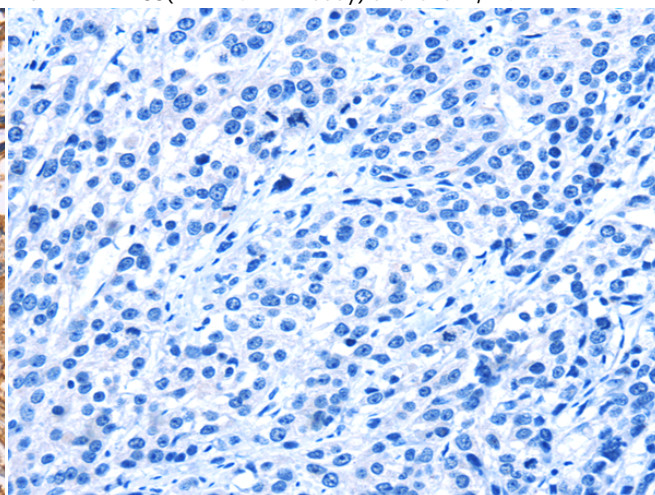
Immunohistochemistry analysis of paraffin embedded Human liver cancer tissue using 216588 (ITGB1 Antibody) at a dilution of 1/50 (Cytoplasm).



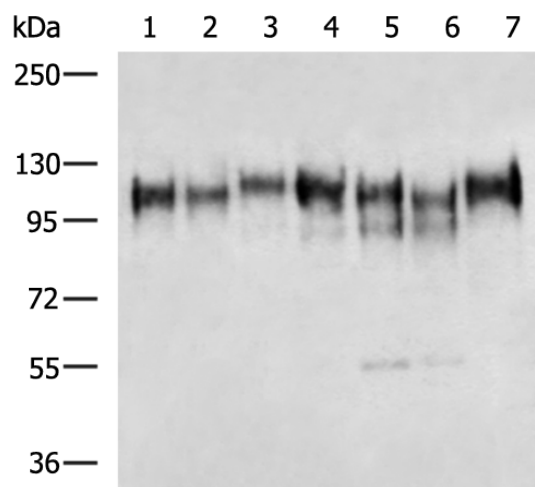
In comparison with the IHC on the left, the same paraffin-embedded Human liver cancer tissue is first treated with the fusion protein and then with 216588 (Anti-ITGB1 Antibody) at dilution 1/50.



The image on the left is immunohistochemistry of paraffin-embedded Human esophagus cancer tissue using 216588 (Anti-ITGB1 Antibody) at a dilution of 1/50.



In comparison with the IHC on the left, the same paraffin-embedded Human esophagus cancer tissue is first treated with fusion protein and then with D220869 (Anti-ITGB1 Antibody) at dilution 1/50.



Gel: 6%SDS-PAGE, Lysate: 40 µg;
 Lane 1-7: Human stomach tissue, Human gastric carcinoma tissue, 823 cell, Human leiomyosarcoma tissue, A172 cell, HUVEC cell, Human gastric carcinoma and surrounding tissue lysates;
 Primary antibody: 216588 (ITGB1 Antibody) at dilution 1/100;
 Secondary antibody: HRP-conjugated Goat anti rabbit IgG at 1/5000 dilution;
 Exposure time: 5 seconds



Product Description

Pioneering GTPase and Oncogene Product Development since 2010
