

ISOC2 RABBIT PAB

货号: S218836

产品全名: ISOC2 兔多抗

基因符号

UNIPROT ID: Q96AB3 (Gene Accession - BC017344)

背景: The exact function of ISOC2 remains unknown.

抗原: Fusion protein of human ISOC2

经过测试的应用: ELISA, IHC

推荐稀释比: IHC: 100-300; ELISA: 5000-10000

种属反应性: Rabbit

克隆性: Rabbit Polyclonal

亚型: Immunogen-specific rabbit IgG

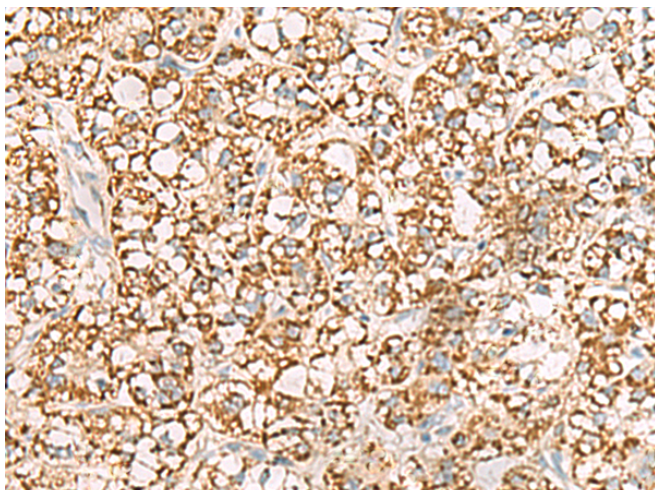
纯化: Antigen affinity purification

种属反应性: Human, Mouse

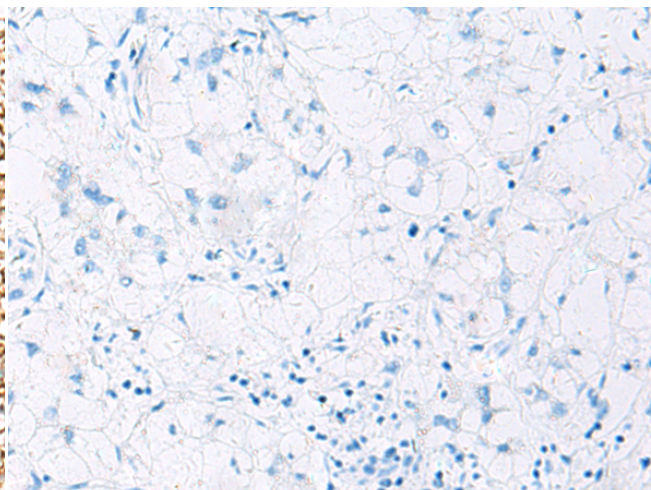
成分: PBS (without Mg²⁺ and Ca²⁺), pH 7.4, 150 mM NaCl, 0.05% Sodium Azide and 40% glycerol

研究领域: Epigenetics and Nuclear Signaling, Cancer

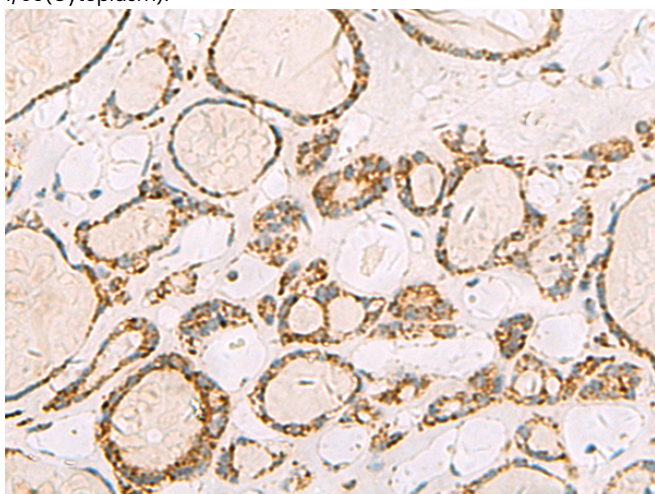
储存和运输: Store at -20°C. Avoid repeated freezing and thawing



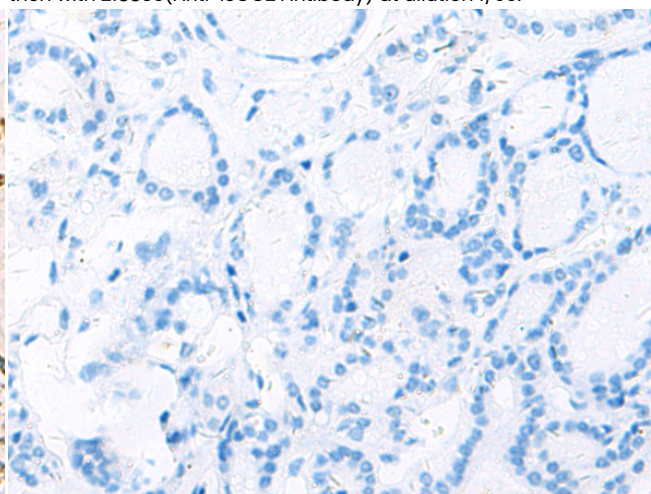
Immunohistochemistry analysis of paraffin embedded Human liver cancer tissue using 218836 (ISOC2 Antibody) at a dilution of 1/95 (Cytoplasm).



In comparison with the IHC on the left, the same paraffin-embedded Human liver cancer tissue is first treated with the fusion protein and then with 218836 (Anti-ISOC2 Antibody) at dilution 1/95.



The image on the left is immunohistochemistry of paraffin-embedded Human thyroid cancer tissue using 218836 (Anti-ISOC2 Antibody) at a dilution of 1/95.



In comparison with the IHC on the left, the same paraffin-embedded Human thyroid cancer tissue is first treated with fusion protein and then with D225314 (Anti-ISOC2 Antibody) at dilution 1/95.



Product Description

Pioneering GTPase and Oncogene Product Development since 2010
