

## ISM1 RABBIT PAB

货号: S222251

产品全名: ISM1 兔多抗

基因符号: ISM; Isthmin; C20orf82; bA149I18.1; dJ107712.1

**UNIPROT ID:** B1AK19 (Gene Accession - NP\_543016 )

背景: Acts as an angiogenesis inhibitor.

抗原: Synthetic peptide of human ISM1

经过测试的应用: ELISA, WB, IHC

推荐稀释比: IHC: 40-200;WB: 1000-5000;ELISA: 5000-10000

种属反应性: Rabbit

克隆性: Rabbit Polyclonal

亚型: Immunogen-specific rabbit IgG

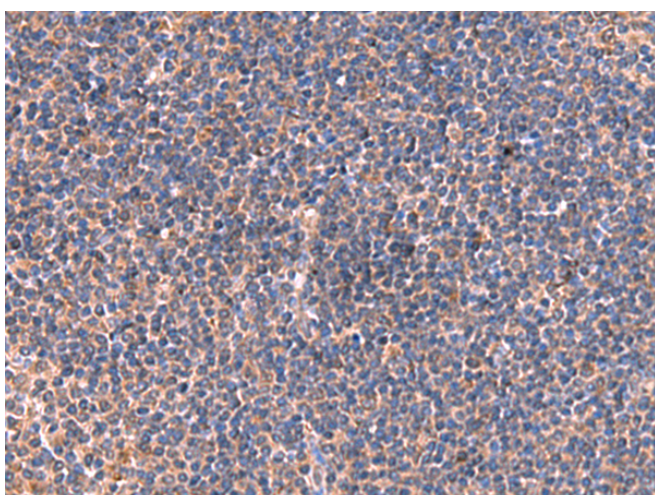
纯化: Antigen affinity purification

种属反应性: Human, Mouse

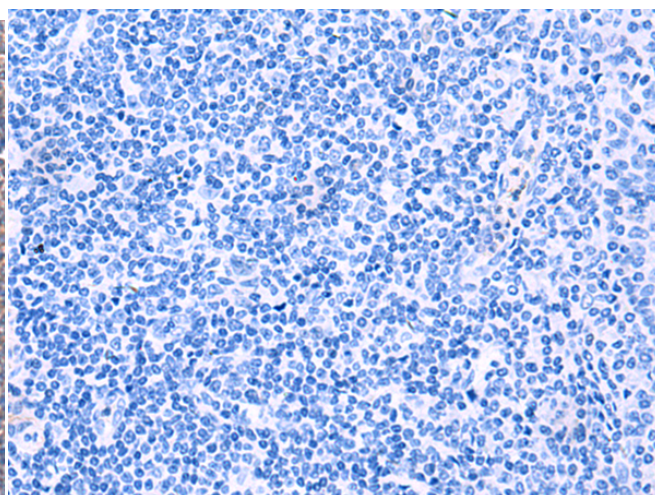
成分: PBS (without Mg<sup>2+</sup> and Ca<sup>2+</sup>), pH 7.4, 150 mM NaCl, 0.05% Sodium Azide and 40% glycerol

研究领域: Cardiovascular

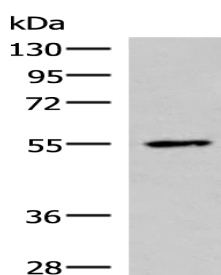
储存和运输: Store at -20°C. Avoid repeated freezing and thawing



Immunohistochemistry analysis of paraffin embedded Human tonsil tissue using 222251 (ISM1 Antibody) at a dilution of 1/40 (Secreted).



In comparison with the IHC on the left, the same paraffin-embedded Human tonsil tissue is first treated with the synthetic peptide and then with 222251 (Anti-ISM1 Antibody) at dilution 1/40.



Gel: 8%SDS-PAGE, Lysate: 40 µg;

Lane: HepG2 cell lysate;

Primary antibody: 222251 (ISM1 Antibody) at dilution 1/1000;

Secondary antibody: HRP-conjugated Goat anti rabbit IgG at 1/5000 dilution;

Exposure time: 20 seconds