

## ISLET 1 RABBIT PAB

货号: N225666

产品全名: Islet 1 兔多抗

基因符号 ISL1; Insulin gene enhancer protein ISL-1; Islet-1

**UNIPROT ID:** P61371

**背景:** ISL1 (ISL1 transcription factor, LIM/homeodomain) is a member of the LIM/homeodomain family of transcription factors. It binds to the enhancer region of the insulin gene, among others, and may play an important role in regulating insulin gene expression. It is central to the development of pancreatic cell lineages and may also be required for motor neuron generation. Islet-1 expression defines cardiac progenitor cell populations and is required for normal cardiac development and asymmetry.

**抗原:** A synthesized peptide derived from human Islet 1

**经过测试的应用:** WB, ICC/IF, IP

**推荐稀释比:** WB: 1/500-1/1000 IF: 1/50-1/200 IP: 1/20

**种属反应性:** Rabbit

**克隆性:** Rabbit Polyclonal

**分子量:** Calculated MW: 39 kDa; Observed MW: 39 kDa

**亚型:** IgG

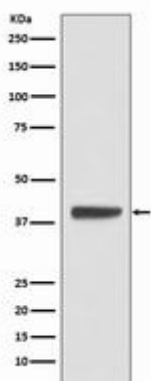
**纯化:** Affinity Chromatography

**种属反应性:** Human, Mouse

**成分:** PBS (without Mg<sup>2+</sup> and Ca<sup>2+</sup>), pH 7.3 containing 50% glycerol, 0.5% BSA and 0.02% sodium azide

**研究领域:** Neuroscience

**储存和运输:** Store at -20°C. Avoid repeated freezing and thawing



Western blot analysis of Islet 1 in K562 lysates using Islet 1 antibody.



# Product Description

Pioneering GTPase and Oncogene Product Development since 2010

---