

IRX6 RABBIT PAB

货号: S222250

产品全名: IRX6 兔多抗

基因符号: IRX7; IRX-3; IRXB3

UNIPROT ID: P78412 (Gene Accession - NP_077311)

背景: IRX6 is one Iroquois (Irx) proteins comprise a family of homeodomain-containing transcription factors involved in patterning and regionalization of embryonic tissues in both vertebrates and invertebrates.

抗原: Synthetic peptide of human IRX6

经过测试的应用: ELISA, IHC

推荐稀释比: IHC: 20-100; ELISA: 5000-10000

种属反应性: Rabbit

克隆性: Rabbit Polyclonal

亚型: Immunogen-specific rabbit IgG

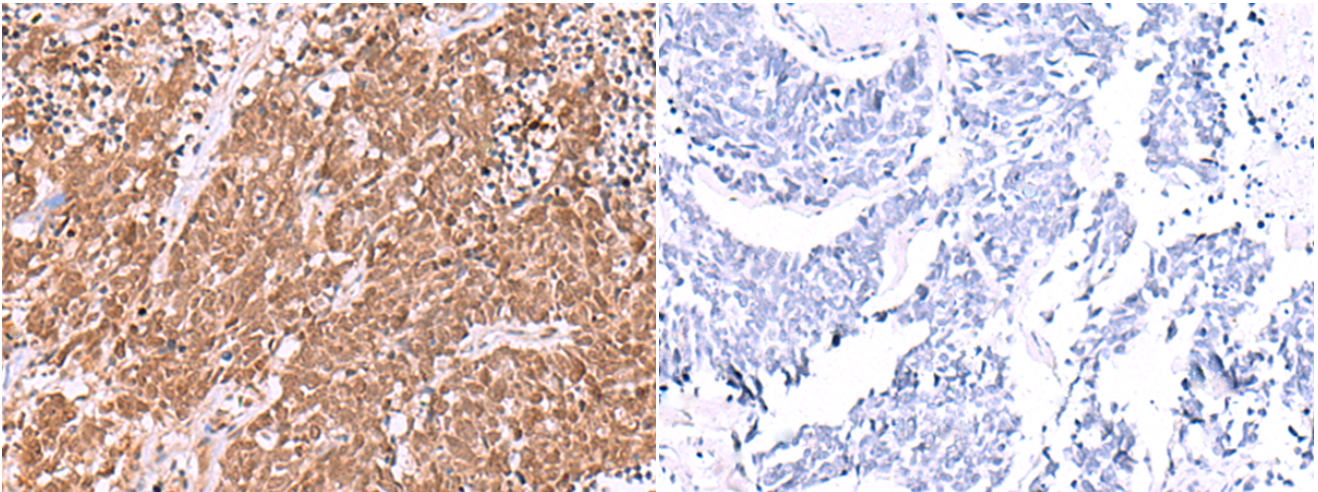
纯化: Antigen affinity purification

种属反应性: Human

成分: PBS (without Mg²⁺ and Ca²⁺), pH 7.4, 150 mM NaCl, 0.05% Sodium Azide and 40% glycerol

研究领域: Epigenetics and Nuclear Signaling

储存和运输: Store at -20°C. Avoid repeated freezing and thawing



Immunohistochemistry analysis of paraffin embedded Human lung cancer tissue using 222250(IRX6 Antibody) at a dilution of 1/20(Nucleus).

In comparison with the IHC on the left, the same paraffin-embedded Human lung cancer tissue is first treated with the synthetic peptide and then with 222250(Anti-IRX6 Antibody) at dilution 1/20.