

IRX3 RABBIT PAB

货号: S222246

产品全名: IRX3 兔多抗

基因符号 IRX-1; IRXB1

UNIPROT ID: P78415 (Gene Accession - NP_077312)

背景: IRX3 is a member of the Iroquois homeobox gene family and plays a role in an early step of neural development. Members of this family appear to play multiple roles during pattern formation of vertebrate embryos.

抗原: Synthetic peptide of human IRX3

经过测试的应用: ELISA, WB, IHC

推荐稀释比: IHC: 25-100;WB: 300-1000;ELISA: 5000-10000

种属反应性: Rabbit

克隆性: Rabbit Polyclonal

亚型: Immunogen-specific rabbit IgG

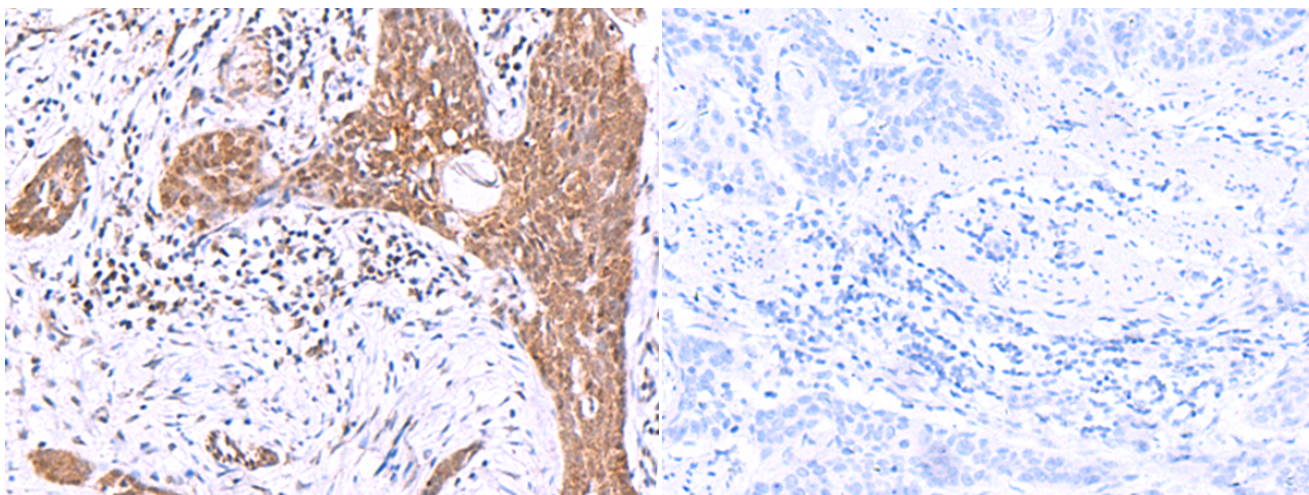
纯化: Antigen affinity purification

种属反应性: Human, Mouse

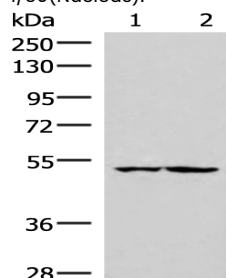
成分: PBS (without Mg²⁺ and Ca²⁺), pH 7.4, 150 mM NaCl, 0.05% Sodium Azide and 40% glycerol

研究领域: Neuroscience

储存和运输: Store at -20°C. Avoid repeated freezing and thawing



Immunohistochemistry analysis of paraffin embedded Human esophagus cancer tissue using 222246(IRX3 Antibody) at a dilution of 1/30(Nucleus). In comparison with the IHC on the left, the same paraffin-embedded Human esophagus cancer tissue is first treated with the synthetic peptide and then with 222246(Anti-IRX3 Antibody) at dilution 1/30.



Gel: 8%SDS-PAGE, Lysate: 40 µg;

Lane 1-2: HepG2 and Jurkat cell lysates;

Primary antibody: 222246(IRX3 Antibody) at dilution 1/300;

Secondary antibody: Goat anti rabbit IgG at 1/8000 dilution;

Exposure time: 30 seconds