

IRX2 RABBIT PAB

货号: S222248

产品全名: IRX2 兔多抗

基因符号: IRXA2

UNIPROT ID: Q9BZ11 (Gene Accession - NP_150366)

背景: IRX2 is a member of the Iroquois homeobox gene family. Members of this family appear to play multiple roles during pattern formation of vertebrate embryos.

抗原: Synthetic peptide of human IRX2

经过测试的应用: ELISA, WB, IHC

推荐稀释比: IHC: 30-150;WB: 500-2000;ELISA: 5000-10000

种属反应性: Rabbit

克隆性: Rabbit Polyclonal

亚型: Immunogen-specific rabbit IgG

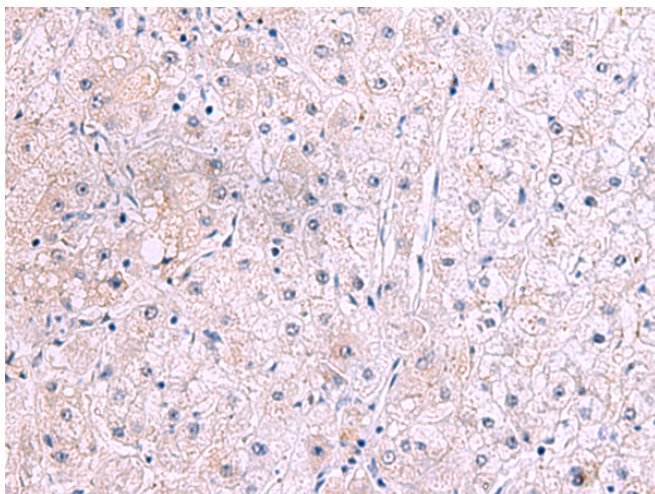
纯化: Antigen affinity purification

种属反应性: Human, Mouse

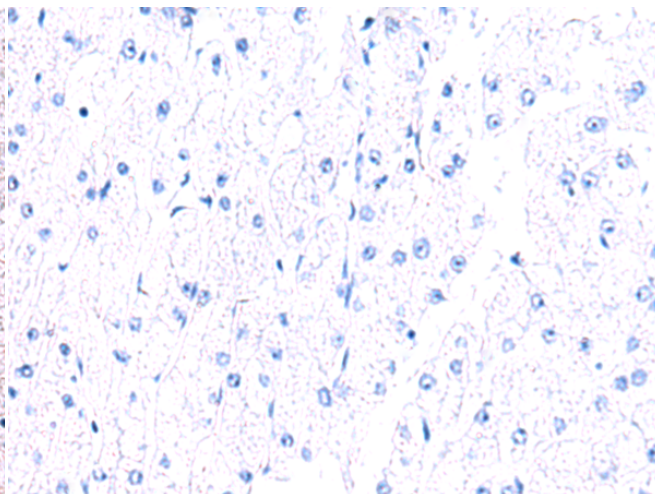
成分: PBS (without Mg²⁺ and Ca²⁺), pH 7.4, 150 mM NaCl, 0.05% Sodium Azide and 40% glycerol

研究领域: Epigenetics and Nuclear Signaling

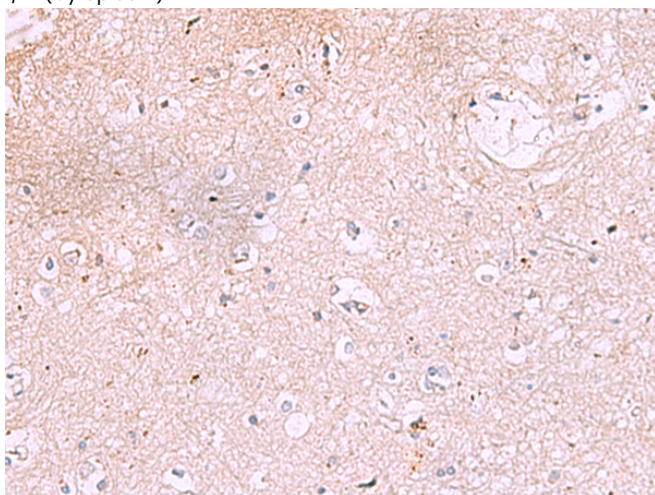
储存和运输: Store at -20°C. Avoid repeated freezing and thawing



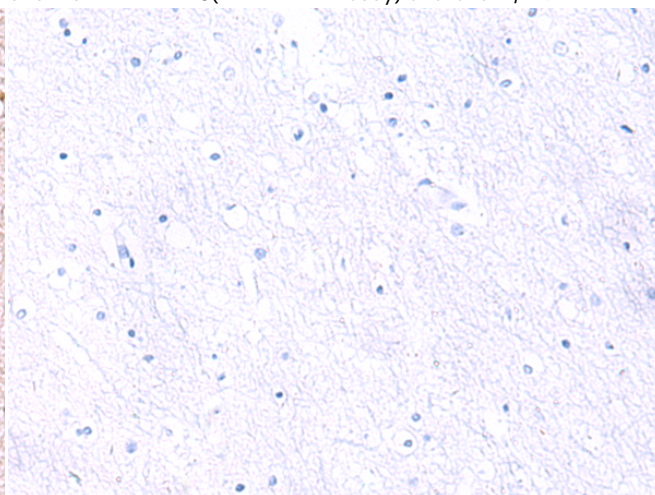
Immunohistochemistry analysis of paraffin embedded Human liver cancer tissue using 222248 (IRX2 Antibody) at a dilution of 1/45 (Cytoplasm).



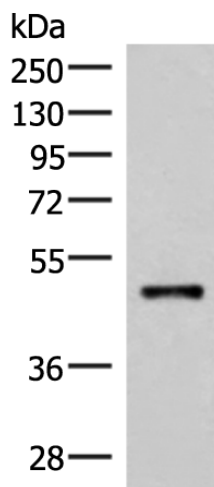
In comparison with the IHC on the left, the same paraffin-embedded Human liver cancer tissue is first treated with the synthetic peptide and then with 222248 (Anti-IRX2 Antibody) at dilution 1/45.



The image on the left is immunohistochemistry of paraffin-embedded Human brain tissue using 222248 (Anti-IRX2 Antibody) at a dilution of 1/45.



In comparison with the IHC on the left, the same paraffin-embedded Human brain tissue is first treated with synthetic peptide and then with D264275 (Anti-IRX2 Antibody) at dilution 1/45.



Gel: 8% SDS-PAGE, Lysate: 40 µg;
Lane: Mouse Lung tissue lysate;
Primary antibody: 222248 (IRX2 Antibody) at dilution 1/300;
Secondary antibody: Goat anti rabbit IgG at 1/8000 dilution;
Exposure time: 20 seconds



Product Description

Pioneering GTPase and Oncogene Product Development since 2010
