

IRGM RABBIT PAB

货号: S217546

产品全名: IRGM 兔多抗

基因符号 IFI1; IRGM1; LRG47; LRG-47

UNIPROT ID: A1A4Y4 (Gene Accession - BC128168)

背景: This gene encodes a member of the p47 immunity-related GTPase family. The encoded protein may play a role in the innate immune response by regulating autophagy formation in response to intracellular pathogens. Polymorphisms that affect the normal expression of this gene are associated with a susceptibility to Crohn's disease and tuberculosis.

抗原: Fusion protein of human IRGM

经过测试的应用: ELISA, WB, IHC

推荐稀释比: IHC: 50-200;WB: 200-1000;ELISA: 1000-2000

种属反应性: Rabbit

克隆性: Rabbit Polyclonal

亚型: Immunogen-specific rabbit IgG

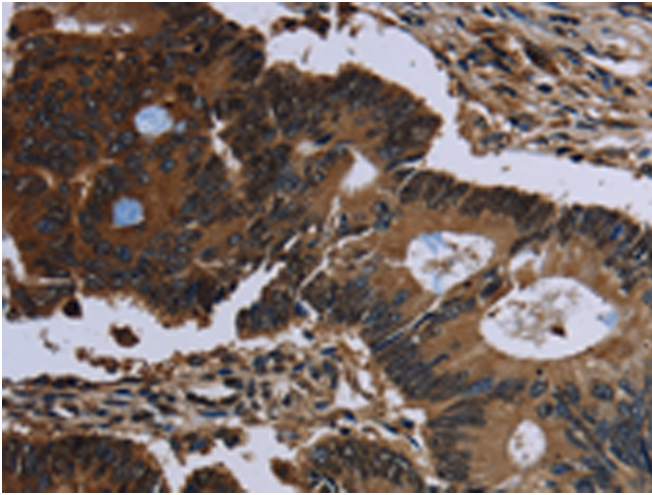
纯化: Antigen affinity purification

种属反应性: Human

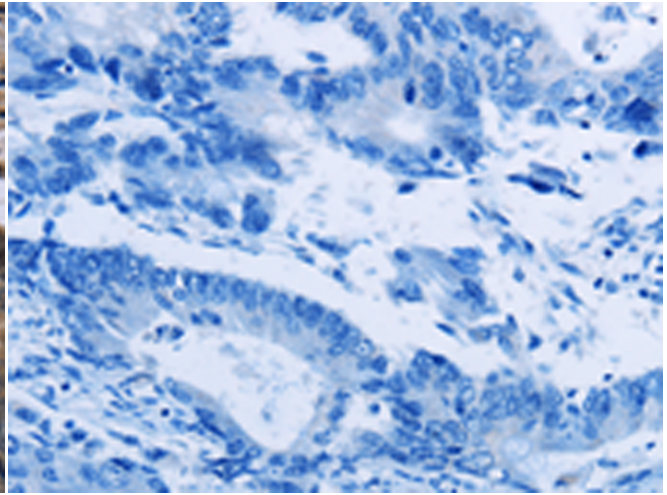
成分: PBS (without Mg²⁺ and Ca²⁺), pH 7.4, 150 mM NaCl, 0.05% Sodium Azide and 40% glycerol

研究领域: Cancer, Cardiovascular, Immunology, Stem Cells

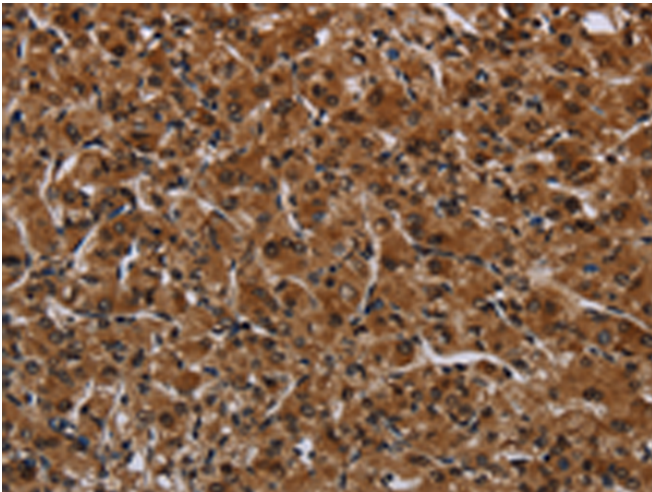
储存和运输: Store at -20°C. Avoid repeated freezing and thawing



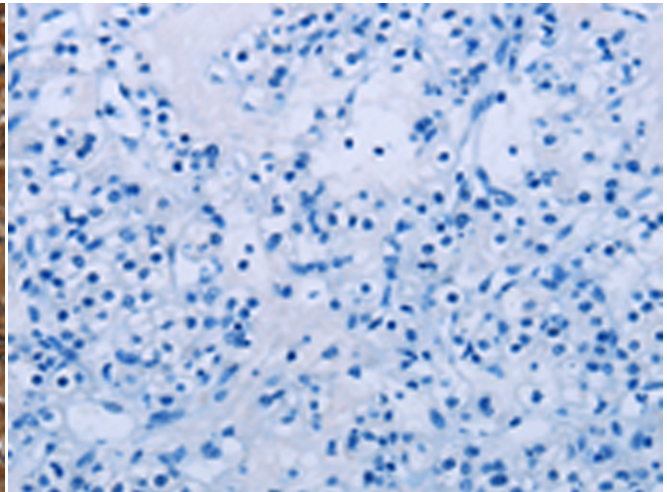
Immunohistochemistry analysis of paraffin embedded Human colon cancer tissue using 217546(IRGM Antibody) at a dilution of 1/60(Cytoplasm).



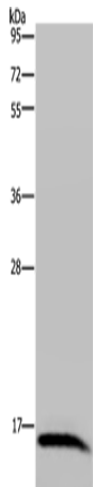
In comparison with the IHC on the left, the same paraffin-embedded Human colon cancer tissue is first treated with the fusion protein and then with 217546(Anti-IRGM Antibody) at dilution 1/60.



The image on the left is immunohistochemistry of paraffin-embedded Human prostate cancer tissue using 217546(Anti-IRGM Antibody) at a dilution of 1/60.



In comparison with the IHC on the left, the same paraffin-embedded Human prostate cancer tissue is first treated with fusion protein and then with D222555(Anti-IRGM Antibody) at dilution 1/60.



Gel: 10%SDS-PAGE, Lysate: 40 µg;
Lane: Human hepatocellular carcinoma tissue;
Primary antibody: 217546(IRGM Antibody) at dilution 1/200;
Secondary antibody: Goat anti rabbit IgG at 1/8000 dilution;
Exposure time: 5 minutes



Product Description

Pioneering GTPase and Oncogene Product Development since 2010
