

IRF7 RABBIT PAB

货号: S219869

产品全名: IRF7 兔多抗

基因符号: IMD39; IRF-7; IRF7A; IRF7B; IRF7C; IRF7H; IRF-7H

UNIPROT ID: Q92985 (Gene Accession - NP_001563)

背景: This gene encodes interferon regulatory factor 7, a member of the interferon regulatory transcription factor (IRF) family. It has been shown to play a role in the transcriptional activation of virus-inducible cellular genes, including interferon beta chain genes. Inducible expression of IRF7 is largely restricted to lymphoid tissue. The encoded protein plays an important role in the innate immune response against DNA and RNA viruses.

抗原: Synthetic peptide of human IRF7

经过测试的应用: ELISA, IHC

推荐稀释比: IHC: 50-100; ELISA: 5000-10000

种属反应性: Rabbit

克隆性: Rabbit Polyclonal

亚型: Immunogen-specific rabbit IgG

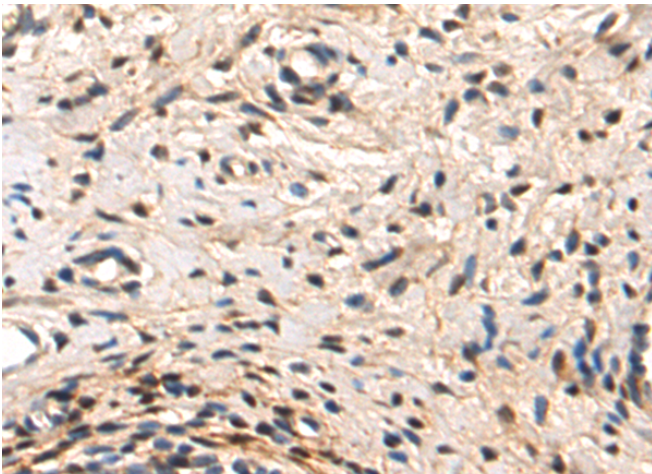
纯化: Antigen affinity purification

种属反应性: Human, Mouse

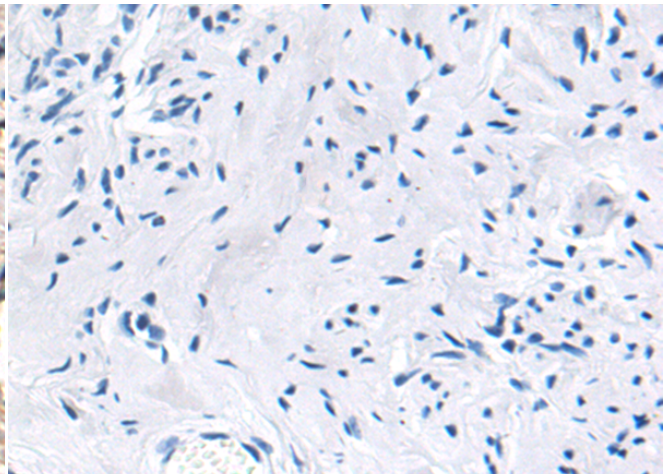
成分: PBS (without Mg²⁺ and Ca²⁺), pH 7.4, 150 mM NaCl, 0.05% Sodium Azide and 40% glycerol

研究领域: Epigenetics and Nuclear Signaling, Immunology

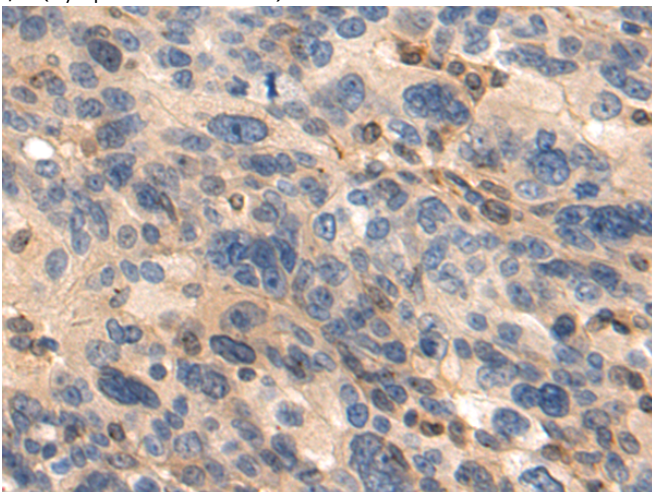
储存和运输: Store at -20°C. Avoid repeated freezing and thawing



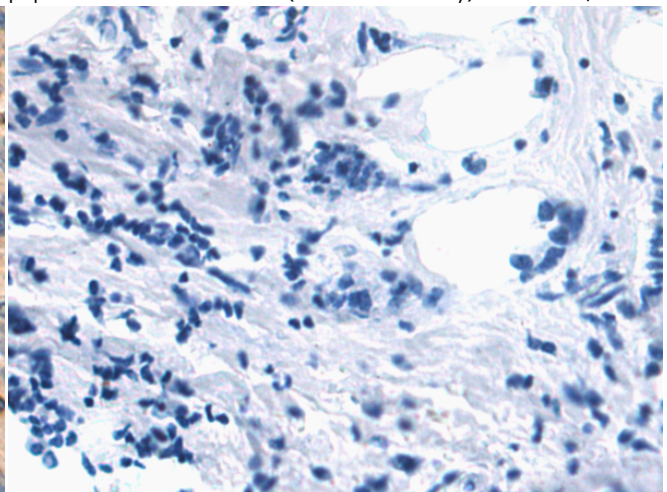
Immunohistochemistry analysis of paraffin embedded Human cervical cancer tissue using 219869 (IRF7 Antibody) at a dilution of 1/50 (Cytoplasm and Nucleus).



In comparison with the IHC on the left, the same paraffin-embedded Human cervical cancer tissue is first treated with the synthetic peptide and then with 219869 (Anti-IRF7 Antibody) at dilution 1/50.



The image on the left is immunohistochemistry of paraffin-embedded Human breast cancer tissue using 219869 (Anti-IRF7 Antibody) at a dilution of 1/50.



In comparison with the IHC on the left, the same paraffin-embedded Human breast cancer tissue is first treated with synthetic peptide and then with D260521 (Anti-IRF7 Antibody) at dilution 1/50.



Product Description

Pioneering GTPase and Oncogene Product Development since 2010
