

IRF4 RABBIT PAB

货号: S216590

产品全名: IRF4 兔多抗

基因符号: MUM1; LSIRF; SHEP8; NF-EM5

UNIPROT ID: Q15306 (Gene Accession - BC015752)

背景: The protein encoded by this gene belongs to the IRF (interferon regulatory factor) family of transcription factors, characterized by a unique tryptophan pentad repeat DNA-binding domain. The IRFs are important in the regulation of interferons in response to infection by virus, and in the regulation of interferon-inducible genes. This family member is lymphocyte specific and negatively regulates Toll-like-receptor (TLR) signaling that is central to the activation of innate and adaptive immune systems. A chromosomal translocation involving this gene and the IgH locus, t(6;14)(p25;q32), may be a cause of multiple myeloma. Alternatively spliced transcript variants have been found for this gene.

抗原: Fusion protein of human IRF4

经过测试的应用: ELISA, IHC

推荐稀释比: IHC: 30-150; ELISA: 2000-5000

种属反应性: Rabbit

克隆性: Rabbit Polyclonal

亚型: Immunogen-specific rabbit IgG

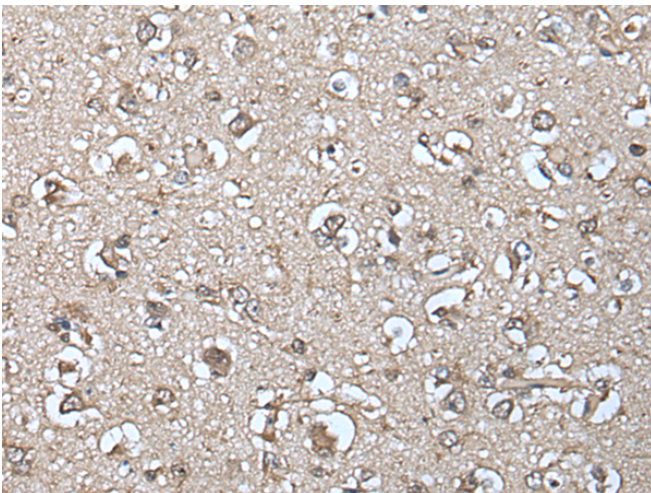
纯化: Antigen affinity purification

种属反应性: Human, Mouse

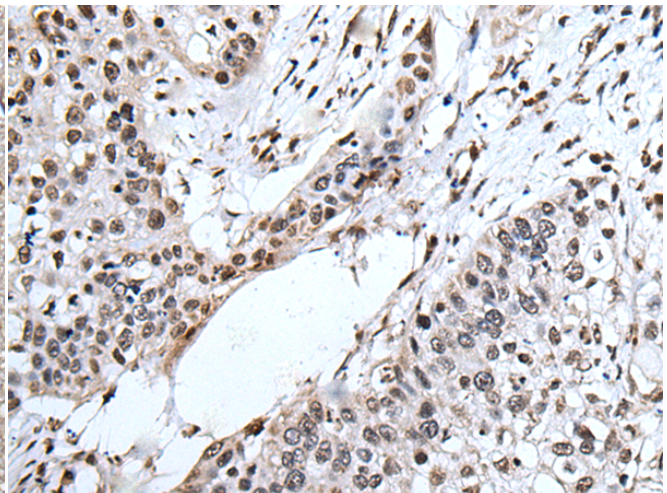
成分: PBS (without Mg²⁺ and Ca²⁺), pH 7.4, 150 mM NaCl, 0.05% Sodium Azide and 40% glycerol

研究领域: Epigenetics and Nuclear Signaling, Cancer

储存和运输: Store at -20°C. Avoid repeated freezing and thawing



Immunohistochemistry analysis of paraffin-embedded Human brain tissue using 216590 (IRF4 Antibody) at a dilution of 1/40 (Nucleus).



Immunohistochemistry analysis of paraffin-embedded Human lung cancer tissue using 216590 (Anti-IRF4 Antibody) at a dilution of 1/40.