

IQCJ RABBIT PAB

货号: S220881

产品全名: IQCJ 兔多抗

基因符号

UNIPROT ID: Q1A5X6 (Gene Accession - NP_001036170)

背景: IQCJ (IQ domain-containing protein J) is a 159 amino acid protein that contains one IQ domain. Existing as four alternatively spliced isoforms, the gene encoding IQCJ maps to human chromosome 3q25.32. Chromosome 3 houses over 1,100 genes, including a chemokine receptor (CKR) gene cluster and a variety of human cancer-related gene loci. Key tumor suppressing genes on chromosome 3 include those that encode the apoptosis mediator RASSF1, the cell migration regulator HYAL1 and the angiogenesis suppressor SEMA3B.

抗原: Synthetic peptide of human IQCJ

经过测试的应用: ELISA, IHC

推荐稀释比: IHC: 25-100; ELISA: 1000-2000

种属反应性: Rabbit

克隆性: Rabbit Polyclonal

亚型: Immunogen-specific rabbit IgG

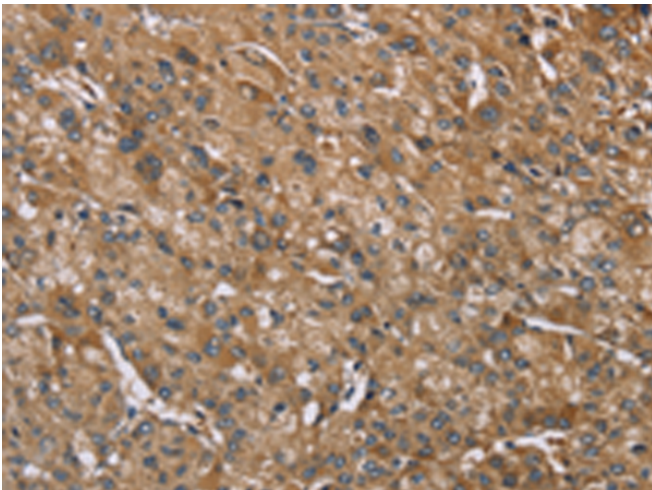
纯化: Antigen affinity purification

种属反应性: Human

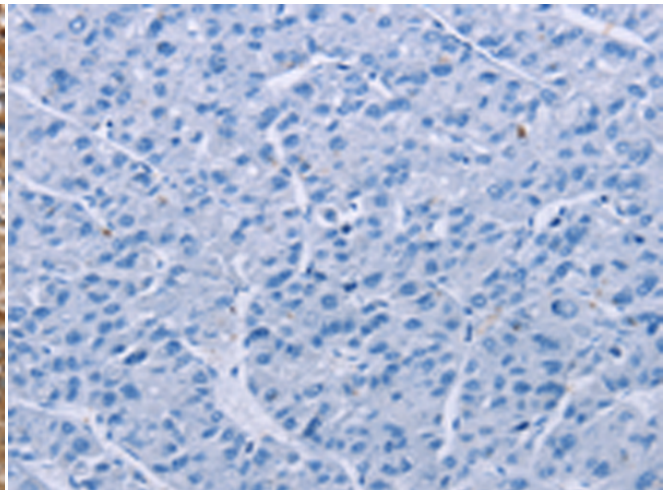
成分: PBS (without Mg²⁺ and Ca²⁺), pH 7.4, 150 mM NaCl, 0.05% Sodium Azide and 40% glycerol

研究领域: Cell Biology

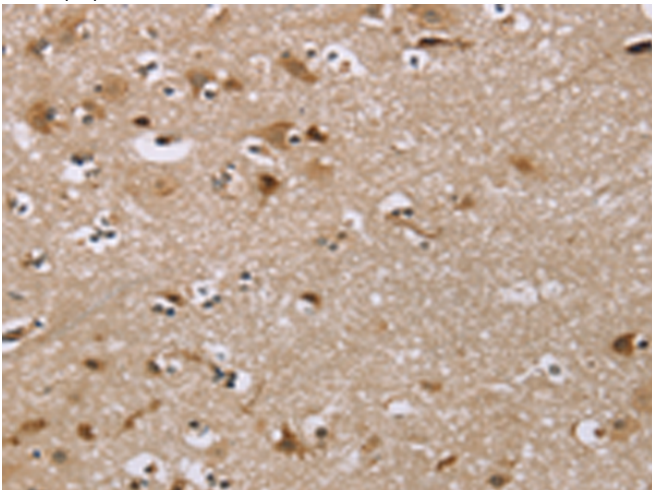
储存和运输: Store at -20°C. Avoid repeated freezing and thawing



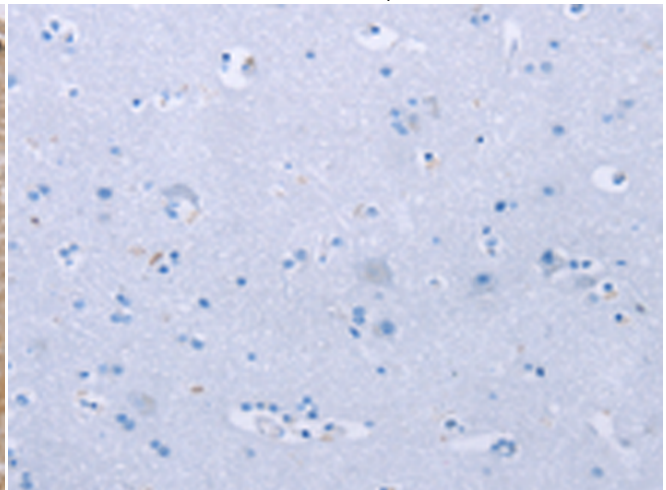
Immunohistochemistry analysis of paraffin embedded Human liver cancer tissue using 220881(IQCJ Antibody) at a dilution of 1/35(Cytoplasm).



In comparison with the IHC on the left, the same paraffin-embedded Human liver cancer tissue is first treated with the synthetic peptide and then with 220881(Anti-IQCJ Antibody) at dilution 1/35.



The image on the left is immunohistochemistry of paraffin-embedded Human brain tissue using 220881(Anti-IQCJ Antibody) at a dilution of 1/35.



In comparison with the IHC on the left, the same paraffin-embedded Human brain tissue is first treated with synthetic peptide and then with D262165(Anti-IQCJ Antibody) at dilution 1/35.



Product Description

Pioneering GTPase and Oncogene Product Development since 2010
