

## IPPK RABBIT PAB

货号: S222242

产品全名: IPPK 兔多抗

基因符号: IP5K; IPK1; C9orf12; INSP5K2; bA476B13.1

**UNIPROT ID:** Q9H8X2 (Gene Accession - NP\_073592)

**背景:** The protein encoded by this gene is a kinase that phosphorylates position 2 of inositol-1,3,4,5,6-pentakisphosphate to form inositol-1,2,3,4,5,6-hexakisphosphate (InsP6). InsP6 has a variety of functions, including stimulation of DNA repair, endocytosis, and mRNA export.

**抗原:** Synthetic peptide of human IPPK

**经过测试的应用:** ELISA, WB, IHC

**推荐稀释比:** IHC: 40-200; WB: 500-2000; ELISA: 5000-10000

**种属反应性:** Rabbit

**克隆性:** Rabbit Polyclonal

**亚型:** Immunogen-specific rabbit IgG

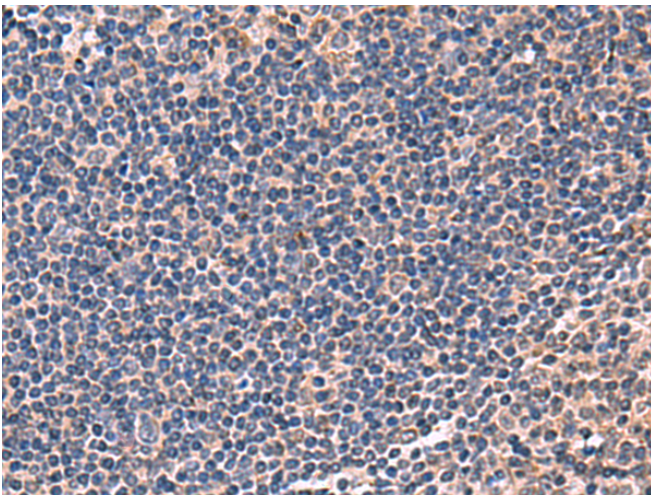
**纯化:** Antigen affinity purification

**种属反应性:** Human, Mouse, Rat

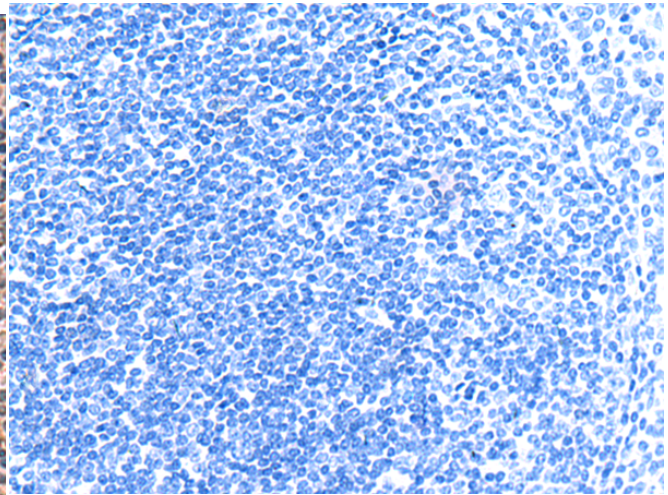
**成分:** PBS (without Mg<sup>2+</sup> and Ca<sup>2+</sup>), pH 7.4, 150 mM NaCl, 0.05% Sodium Azide and 40% glycerol

**研究领域:** Signal Transduction

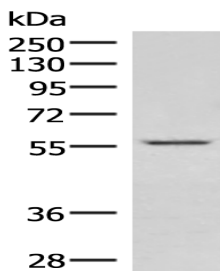
**储存和运输:** Store at -20°C. Avoid repeated freezing and thawing



Immunohistochemistry analysis of paraffin embedded Human tonsil tissue using 222242(IPPK Antibody) at a dilution of 1/50(Cytoplasm).



In comparison with the IHC on the left, the same paraffin-embedded Human tonsil tissue is first treated with the synthetic peptide and then with 222242(Anti-IPPK Antibody) at dilution 1/50.



Gel: 8%SDS-PAGE, Lysate: 40 µg;

Lane: Jurkat cell lysate;

Primary antibody: 222242(IPPK Antibody) at dilution 1/550;

Secondary antibody: Goat anti rabbit IgG at 1/8000 dilution;

Exposure time: 8 minutes