

## IP6K3 RABBIT PAB

货号: S222215

产品全名: IP6K3 兔多抗

基因符号: IHPK3; INSP6K3

**UNIPROT ID:** Q96PC2 (Gene Accession - NP\_473452)

**背景:** This gene encodes a protein that belongs to the inositol phosphokinase (IPK) family. This protein is likely responsible for the conversion of inositol hexakisphosphate (InsP6) to diphosphoinositol pentakisphosphate (InsP7/PP-InsP5). It may also convert 1,3,4,5,6-pentakisphosphate (InsP5) to PP-InsP4. Alternative splicing results in multiple transcript variants encoding the same protein.

**抗原:** Synthetic peptide of human IP6K3

**经过测试的应用:** ELISA, IHC

**推荐稀释比:** IHC: 40-200; ELISA: 5000-10000

**种属反应性:** Rabbit

**克隆性:** Rabbit Polyclonal

**亚型:** Immunogen-specific rabbit IgG

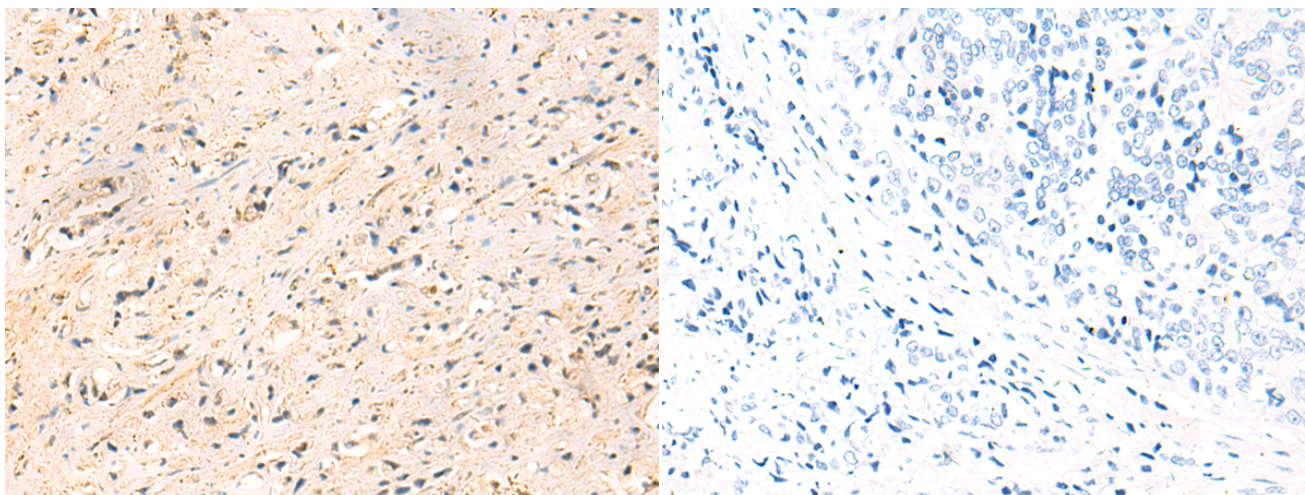
**纯化:** Antigen affinity purification

**种属反应性:** Human

**成分:** PBS (without Mg<sup>2+</sup> and Ca<sup>2+</sup>), pH 7.4, 150 mM NaCl, 0.05% Sodium Azide and 40% glycerol

**研究领域:** Signal Transduction

**储存和运输:** Store at -20°C. Avoid repeated freezing and thawing



Immunohistochemistry analysis of paraffin embedded Human prostate cancer tissue using 222215(IP6K3 Antibody) at a dilution of 1/50(Cytoplasm).

In comparison with the IHC on the left, the same paraffin-embedded Human prostate cancer tissue is first treated with the synthetic peptide and then with 222215(Anti-IP6K3 Antibody) at dilution 1/50.