

IP6K2 RABBIT PAB

货号: S219179

产品全名: IP6K2 兔多抗

基因符号: PIUS; IHPK2

UNIPROT ID: Q9UHH9 (Gene Accession - BC004469)

背景: This gene encodes a protein that belongs to the inositol phosphokinase (IPK) family. This protein is likely responsible for the conversion of inositol hexakisphosphate (InsP6) to diphosphoinositol pentakisphosphate (InsP7/PP-InsP5). It may also convert 1,3,4,5,6-pentakisphosphate (InsP5) to PP-InsP4 and affect the growth suppressive and apoptotic activities of interferon-beta in some ovarian cancers. Alternative splicing results in multiple transcript variants encoding different isoforms.

抗原: Fusion protein of human IP6K2

经过测试的应用: ELISA, WB, IHC

推荐稀释比: IHC: 200-400;WB: 500-2000;ELISA: 5000-10000

种属反应性: Rabbit

克隆性: Rabbit Polyclonal

亚型: Immunogen-specific rabbit IgG

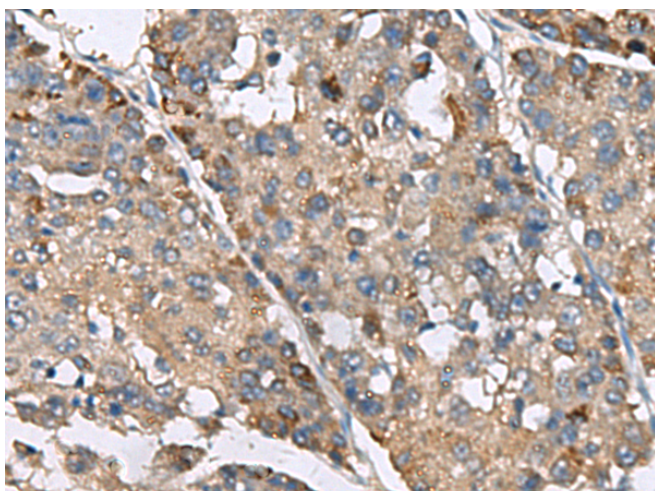
纯化: Antigen affinity purification

种属反应性: Human

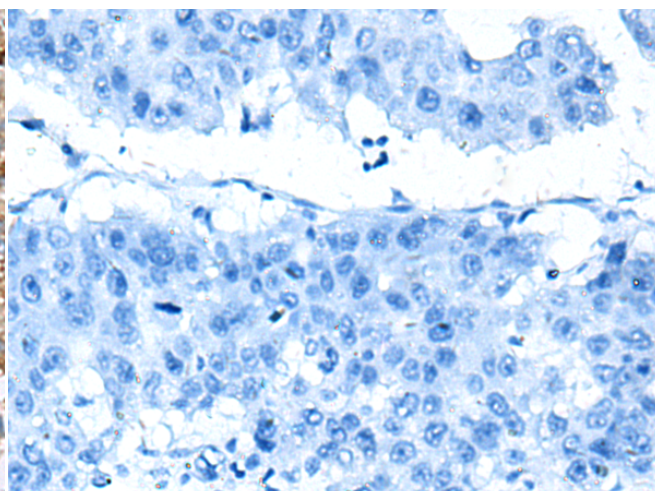
成分: PBS (without Mg²⁺ and Ca²⁺), pH 7.4, 150 mM NaCl, 0.05% Sodium Azide and 40% glycerol

研究领域: Signal Transduction

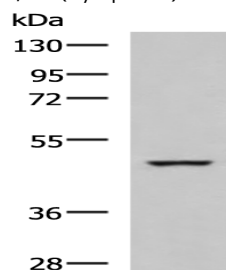
储存和运输: Store at -20°C. Avoid repeated freezing and thawing



Immunohistochemistry analysis of paraffin embedded Human liver cancer tissue using 219179 (IP6K2 Antibody) at a dilution of 1/220 (Cytoplasm).



In comparison with the IHC on the left, the same paraffin-embedded Human liver cancer tissue is first treated with the fusion protein and then with 219179 (Anti-IP6K2 Antibody) at dilution 1/220.



Gel: 8%SDS-PAGE, Lysate: 40 µg;

Lane: K562 cell lysate;

Primary antibody: 219179 (IP6K2 Antibody) at dilution 1/650;

Secondary antibody: HRP-conjugated Goat anti rabbit IgG at 1/5000 dilution;

Exposure time: 5 seconds