

## INTEGRIN LINKED ILK RABBIT PAB

货号: N225694

产品全名: Integrin Linked ILK 兔多抗

基因符号 ILK; ILK1; ILK2; Integrin-linked protein kinase; 59 kDa  
serine/threonine-protein kinase; ILK-1; ILK-2; p59ILK

**UNIPROT ID:** Q13418

**背景:** Integrin-linked kinases (ILKs) couple integrins and growth factors to downstream pathways involved in cell survival, cell cycle control, cell-cell adhesion and cell motility. ILK functions as a scaffold bridging the extracellular matrix (ECM) and growth factor receptors to the actin cytoskeleton through interactions with integrin, PINCH (which links ILK to the RTKs via Nck2), CH-ILKBP and affixin.

**抗原:** A synthesized peptide derived from human ILK

**经过测试的应用:** WB,IHC-P,ICC/IF,IP,FC

**推荐稀释比:** WB: 1/500-1/1000 IHC: 1/50-1/100 IF: 1/50-1/200 IP: 1/20 FC: 1/50-1/100

**种属反应性:** Rabbit

**克隆性:** Rabbit Polyclonal

**分子量:** Calculated MW: 51 kDa; Observed MW: 51 kDa

**亚型:** IgG

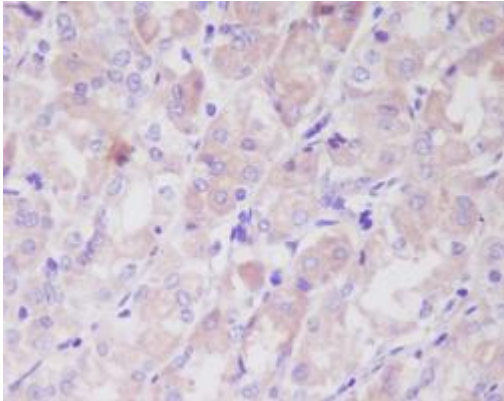
**纯化:** Affinity Chromatography

**种属反应性:** Human, Mouse and Rat

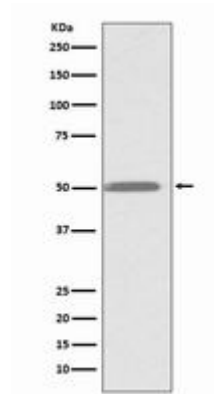
**成分:** PBS (without Mg<sup>2+</sup> and Ca<sup>2+</sup>), pH 7.3 containing 50% glycerol, 0.5% BSA and 0.02% sodium azide

**研究领域:** Signal Transduction

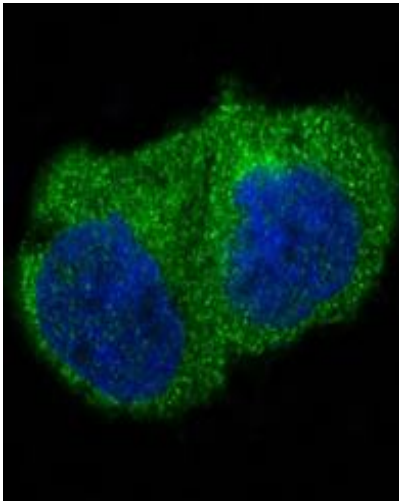
**储存和运输:** Store at -20°C. Avoid repeated freezing and thawing



Immunohistochemistry analysis of paraffin-embedded Human stomach using ILK antibody. High-pressure and temperature Sodium Citrate pH 6.0 was used for antigen retrieval.



Western blot analysis of ILK in K562 lysates using Integrin Linked ILK antibody.



Immunofluorescence analysis of Integrin Linked ILK in 293 using ILK antibody.