

INTEGRIN BETA 7 RABBIT PAB

货号: N225229

产品全名: Integrin beta 7 兔多抗

基因符号 Integrin beta-7 (Gut homing receptor beta subunit)

UNIPROT ID: P26010

背景: Integrin alpha-4/beta-7 (Peyer patches-specific homing receptor LPAM-1) is an adhesion molecule that mediates lymphocyte migration and homing to gut-associated lymphoid tissue (GALT).

抗原: Synthesized peptide derived from human Integrin β 7. at AA range: 671-720

经过测试的应用: WB,ELISA

推荐稀释比: WB: 1/500-1/1000 ELISA: 1/10000

种属反应性: Rabbit

克隆性: Rabbit Polyclonal

分子量: Calculated MW: 87 kDa; Observed MW: 130 kDa

亚型: IgG

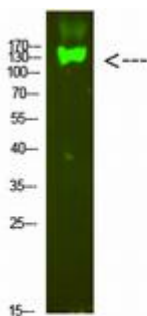
纯化: Affinity Purified

种属反应性: Human,Mouse

成分: PBS (without Mg²⁺ and Ca²⁺), pH 7.3 containing 50% glycerol, 0.5% BSA and 0.02% sodium azide

研究领域: Signal Transduction

储存和运输: Store at -20°C. Avoid repeated freezing and thawing



Western blot analysis of Integrin beta 7 in mouse heart lysates using Integrin beta 7 antibody.