

## INTEGRIN BETA 6 RABBIT MAB

货号: N262427

产品全名: Integrin beta 6 兔单克隆抗体

基因符号 AllH; Integrin beta-6

**UNIPROT ID:** P18564

**背景:** This gene encodes a protein that is a member of the integrin superfamily. Members of this family are adhesion receptors that function in signaling from the extracellular matrix to the cell. Integrins are heterodimeric integral membrane proteins composed of an alpha chain and a beta chain. The encoded protein forms a dimer with an alpha v chain and this heterodimer can bind to ligands like fibronectin and transforming growth factor beta 1. Alternate splicing results in multiple transcript variants.

**抗原:** A synthetic peptide of human ITGB6

**经过测试的应用:** WB,IP

**推荐稀释比:** WB: 1/500-1/1000 IP: 1/20

**种属反应性:** Rabbit

**克隆性:** Rabbit Monoclonal

**克隆编号:** R04-6E9

**分子量:** Calculated MW: 86 kDa; Observed MW: 86 kDa

**亚型:** IgG

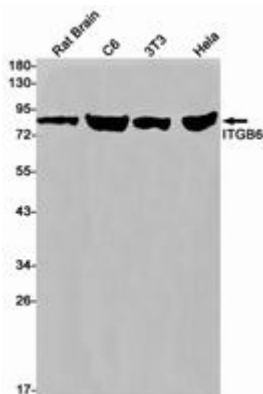
**纯化:** Affinity Purified

**种属反应性:** Human, Mouse and Rat

**成分:** PBS (without Mg<sup>2+</sup> and Ca<sup>2+</sup>), pH 7.3 containing 50% glycerol, 0.5% BSA and 0.02% sodium azide

**研究领域:** Signal Transduction

**储存和运输:** Store at -20°C. Avoid repeated freezing and thawing



Western blot analysis of ITGB6 in rat Brain, C6, 3T3, HeLa lysates using Integrin beta 6 antibody.



# Product Description

Pioneering GTPase and Oncogene Product Development since 2010

---