

INTEGRIN BETA 3 RABBIT PAB

货号: N225477

产品全名: Integrin beta 3 兔多抗

基因符号 ITGB3; GP3A; Integrin beta-3; Platelet membrane glycoprotein IIIa; GPIIIa; CD antigen CD61

UNIPROT ID: P05106

背景: Integrin alpha-IIb/beta-3 recognizes the sequence H-H-L-G-G-G-A-K-Q-A-G-D-V in fibrinogen gamma chain. Following activation integrin alpha-IIb/beta-3 brings about platelet/platelet interaction through binding of soluble fibrinogen. This step leads to rapid platelet aggregation which physically plugs ruptured endothelial surface. Fibrinogen binding enhances SELP expression in activated platelets (By similarity).

抗原: The antiserum was produced against synthesized peptide derived from the C-terminal region of human ITGB3. AA range:621-670

经过测试的应用: WB,IHC-P,ELISA

推荐稀释比: WB: 1/500-1/1000 IHC: 1/50-1/100 ELISA: 1/10000

种属反应性: Rabbit

克隆性: Rabbit Polyclonal

分子量: Calculated MW: 87 kDa; Observed MW: 87 kDa

亚型: IgG

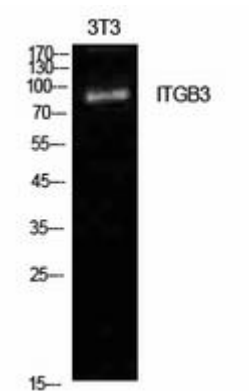
纯化: Affinity Purified

种属反应性: Human

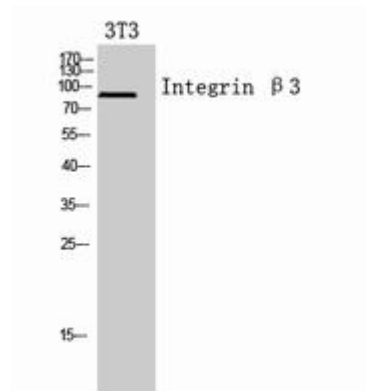
成分: PBS (without Mg²⁺ and Ca²⁺), pH 7.3 containing 50% glycerol, 0.5% BSA and 0.02% sodium azide

研究领域: Cardiovascular

储存和运输: Store at -20°C. Avoid repeated freezing and thawing



Western blot analysis of Integrin beta 3 in NIH3T3 lysates using Integrin beta3 antibody.



Western blot analysis of Integrin beta 3 in 3T3 lysates using Integrin beta 3 antibody.