

INTEGRIN ALPHA L RABBIT MAB

货号: N263257

产品全名: Integrin alpha L 兔单克隆抗体

基因符号 Cd11a; LFA-1; Ly-15; Ly-21; (p180); LFA-1A

UNIPROT ID: P24063

背景: Integrin ITGAL/ITGB2 is a receptor for ICAM1, ICAM2, ICAM3 and ICAM4.

抗原: Recombinant protein of mouse CD11a

经过测试的应用: WB,IHC-P

推荐稀释比: WB: 1/500-1/1000 IHC: 1/50-1/100

种属反应性: Rabbit

克隆性: Rabbit Monoclonal

克隆编号: R08-314

分子量: Calculated MW: 128 kDa; Observed MW: 160 kDa

亚型: IgG

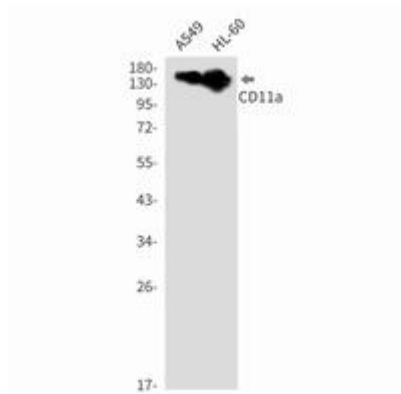
纯化: Affinity Purified

种属反应性: Human,Mouse

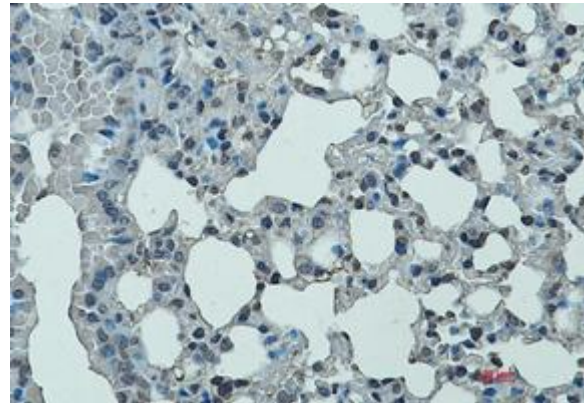
成分: PBS (without Mg²⁺ and Ca²⁺), pH 7.3 containing 50% glycerol, 0.5% BSA and 0.02% sodium azide

研究领域: Tags & Cell Markers

储存和运输: Store at -20°C. Avoid repeated freezing and thawing



Western blot analysis of CD11a in A549, HL-60 lysates using CD11a antibody.



Immunohistochemistry analysis of paraffin-embedded mouse lung using Integrin alpha L antibody. High-pressure and temperature Sodium Citrate pH 6.0 was used for antigen retrieval.