

## INTEGRIN ALPHA 4 RABBIT PAB

货号: N225007

产品全名: Integrin alpha 4 兔多抗

基因符号 ITGA4; CD49D; Integrin alpha-4; CD49 antigen-like family member D; Integrin alpha-IV; VLA-4 subunit alpha; CD49d

**UNIPROT ID:** P13612

背景: ITGA4 Integrins alpha-4/beta-1 (VLA-4) and alpha-4/beta-7 are receptors for fibronectin. They recognize one or more domains within the alternatively spliced CS-1 and CS-5 regions of fibronectin. They are also receptors for VCAM1. Integrin alpha-4/beta-1 recognizes the sequence Q-I-D-S in VCAM1.

抗原: The antiserum was produced against synthesized peptide derived from the Internal region of human ITGA4. AA range:571-620

经过测试的应用: WB,IHC-P,ELISA

推荐稀释比: WB: 1/500-1/1000 IHC: 1/50-1/100 ELISA: 1/10000

种属反应性: Rabbit

克隆性: Rabbit Polyclonal

分子量: Calculated MW: 115 kDa; Observed MW: 120 kDa

亚型: IgG

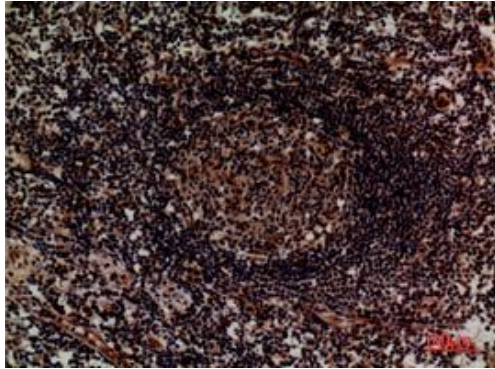
纯化: Affinity Purified

种属反应性: Human, Mouse and Rat

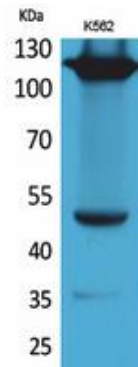
成分: PBS (without Mg<sup>2+</sup> and Ca<sup>2+</sup>), pH 7.3 containing 50% glycerol, 0.5% BSA and 0.02% sodium azide

研究领域: Signal Transduction

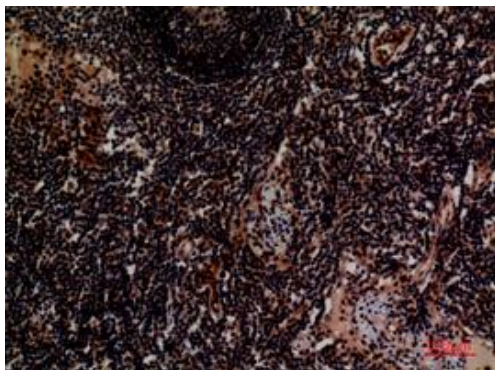
储存和运输: Store at -20°C. Avoid repeated freezing and thawing



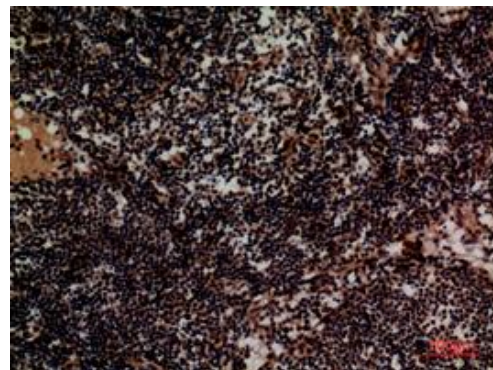
Immunohistochemistry analysis of paraffin-embedded Human lymph using Integrin alpha 4 antibody. High-pressure and temperature Sodium Citrate pH 6.0 was used for antigen retrieval.



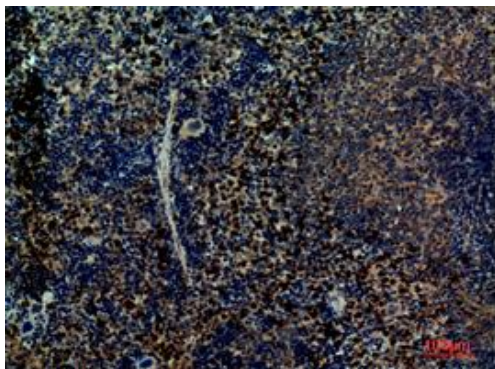
Western blot analysis of Integrin alpha 4 in K562 lysates using Integrin alpha 4 antibody.



Immunohistochemistry analysis of paraffin-embedded Human lymph using Integrin alpha 4 antibody. High-pressure and temperature Sodium Citrate pH 6.0 was used for antigen retrieval.



Immunohistochemistry analysis of paraffin-embedded Human lymph using Integrin alpha 4 antibody. High-pressure and temperature Sodium Citrate pH 6.0 was used for antigen retrieval.



Immunohistochemistry analysis of paraffin-embedded mouse spleen using Integrin alpha 4 antibody. High-pressure and temperature Sodium Citrate pH 6.0 was used for antigen retrieval.



# Product Description

Pioneering GTPase and Oncogene Product Development since 2010

---