

INTEGRIN ALPHA 4 RABBIT PAB

货号: N225069

产品全名: Integrin alpha 4 兔多抗

基因符号 ITGAD; Integrin alpha-D; ADB2; CD11 antigen-like family member D; Leukointegrin alpha D; CD11d

UNIPROT ID: Q13349

背景: Integrin alpha-D/beta-2 is a receptor for ICAM3 and VCAM1.

抗原: The antiserum was produced against synthesized peptide derived from the Internal region of human ITGAD. AA range:901-950

经过测试的应用: WB,IHC-P,ELISA

推荐稀释比: WB: 1/500-1/1000 IHC: 1/50-1/100 ELISA: 1/10000

种属反应性: Rabbit

克隆性: Rabbit Polyclonal

分子量: Calculated MW: 127 kDa; Observed MW: 127 kDa

亚型: IgG

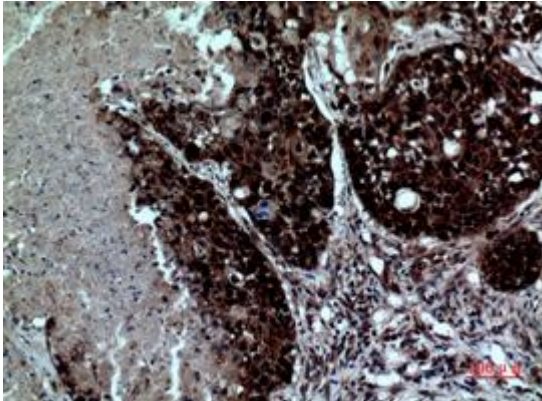
纯化: Affinity Purified

种属反应性: Human

成分: PBS (without Mg²⁺ and Ca²⁺), pH 7.3 containing 50% glycerol, 0.5% BSA and 0.02% sodium azide

研究领域: Immunology

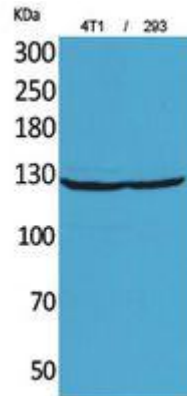
储存和运输: Store at -20°C. Avoid repeated freezing and thawing



Immunohistochemistry analysis of paraffin-embedded Human lung using Integrin alpha 4 antibody. High-pressure and temperature Sodium Citrate pH 6.0 was used for antigen retrieval.



Immunohistochemistry analysis of paraffin-embedded Human spleen using Integrin alpha 4 antibody. High-pressure and temperature Sodium Citrate pH 6.0 was used for antigen retrieval.



Western blot analysis of Integrin alpha 4 in 4T 293 lysates using Integrin alpha 4 antibody.