

INSULIN RECEPTOR RELATED PROTEIN RABBIT PAB

货号: N225885

产品全名: Insulin Receptor Related Protein 兔多抗

基因符号 INSRR; Insulin receptor related receptor precursor; IR related receptor; IRR; SIRR

UNIPROT ID: P14616

背景: This receptor probably binds an insulin related protein and has a tyrosine-protein kinase activity. It phosphorylates the insulin receptor substrates IRS-1 and IRS-2.

抗原: A synthesized peptide derived from human Insulin Receptor R

经过测试的应用: WB,IHC-P

推荐稀释比: WB: 1/500-1/1000 IHC: 1/50-1/100

种属反应性: Rabbit

克隆性: Rabbit Polyclonal

分子量: Calculated MW: 144 kDa; Observed MW: 80 kDa

亚型: IgG

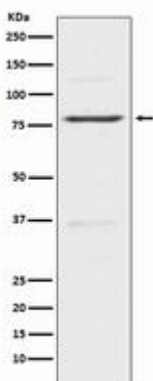
纯化: Affinity Chromatography

种属反应性: Human, Mouse and Rat

成分: PBS (without Mg²⁺ and Ca²⁺), pH 7.3 containing 50% glycerol, 0.5% BSA and 0.02% sodium azide

研究领域: Signal Transduction

储存和运输: Store at -20°C. Avoid repeated freezing and thawing



Western blot analysis of Insulin Receptor R in HeLa lysates using Insulin Receptor Related Protein antibody.