

INSULIN DEGRADING ENZYME RABBIT MAB

货号: N263625

产品全名: Insulin Degrading Enzyme 兔单克隆抗体

基因符号 INSULYSIN; Insulin degrading enzyme; IDE

UNIPROT ID: P14735

背景: This gene encodes a zinc metallopeptidase that degrades intracellular insulin, and thereby terminates insulin's activity, as well as participating in intercellular peptide signalling by degrading diverse peptides such as glucagon, amylin, bradykinin, and kallidin. The preferential affinity of this enzyme for insulin results in insulin-mediated inhibition of the degradation of other peptides such as beta-amyloid.

抗原: A synthesized peptide derived from human IDE

经过测试的应用: WB,IHC-P

推荐稀释比: WB: 1/500-1/1000 IHC: 1/50-1/100

种属反应性: Rabbit

克隆性: Rabbit Monoclonal

克隆编号: R07-6D3

分子量: Calculated MW: 118 kDa; Observed MW: 118 kDa

亚型: IgG

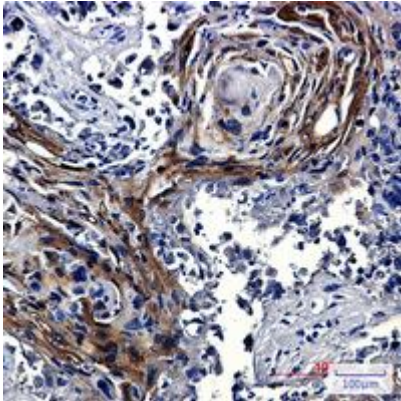
纯化: Affinity Purified

种属反应性: Human

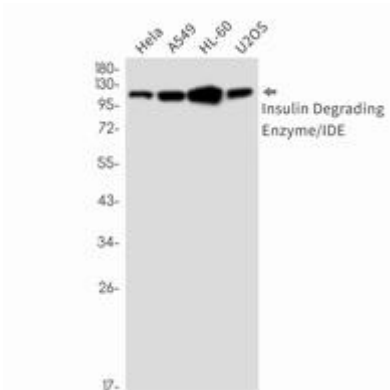
成分: PBS (without Mg²⁺ and Ca²⁺), pH 7.3 containing 50% glycerol, 0.5% BSA and 0.02% sodium azide

研究领域: Neuroscience

储存和运输: Store at -20°C. Avoid repeated freezing and thawing



Immunohistochemistry analysis of paraffin-embedded Human lung cancer using Insulin Degrading Enzyme/IDE antibody. High-pressure and temperature Sodium Citrate pH 6.0 was used for antigen retrieval.



Western blot analysis of Insulin Degrading Enzyme/IDE in Hela, A549, HL-60, U2OS lysates using Insulin Degrading Enzyme antibody.