

INSULIN DEGRADING ENZYME RABBIT MAB

货号: N263387

产品全名: Insulin Degrading Enzyme 兔单克隆抗体

基因符号 INSULYSIN; Insulin degrading enzyme; IDE

UNIPROT ID: P14735

背景: This gene encodes a zinc metallopeptidase that degrades intracellular insulin, and thereby terminates insulin's activity, as well as participating in intercellular peptide signalling by degrading diverse peptides such as glucagon, amylin, bradykinin, and kallidin. The preferential affinity of this enzyme for insulin results in insulin-mediated inhibition of the degradation of other peptides such as beta-amyloid.

抗原: A synthetic peptide of human Insulin degrading enzyme/IDE

经过测试的应用: WB, ICC/IF

推荐稀释比: WB: 1/500-1/1000 IF: 1/50-1/200

种属反应性: Rabbit

克隆性: Rabbit Monoclonal

克隆编号: R04-4E8

分子量: Calculated MW: 118 kDa; Observed MW: 118 kDa

亚型: IgG

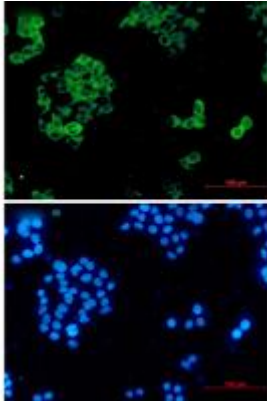
纯化: Affinity Purified

种属反应性: Human

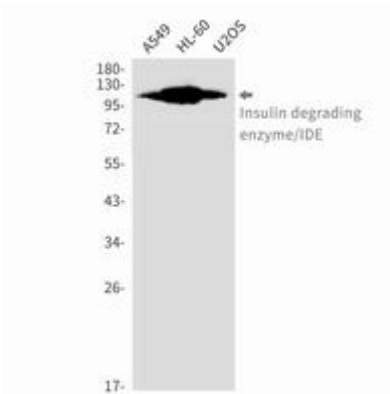
成分: PBS (without Mg²⁺ and Ca²⁺), pH 7.3 containing 50% glycerol, 0.5% BSA and 0.02% sodium azide

研究领域: Neuroscience

储存和运输: Store at -20°C. Avoid repeated freezing and thawing



Immunocytochemistry analysis of Insulin degrading enzyme/IDE (green) in HeLa using Insulin degrading enzyme/IDE antibody, and DAPI (blue)



Western blot analysis of Insulin degrading enzyme/IDE in A549, HL-60, U2OS lysates using Insulin Degrading Enzyme antibody.