

INSM2 RABBIT PAB

货号: S222230

产品全名: INSM2 兔多抗

基因符号 IA6; IA-6; mlt1

UNIPROT ID: Q96T92 (Gene Accession - NP_115983)

背景: May function as a growth suppressor or tumor suppressor in liver cells and in certain neurons.

抗原: Synthetic peptide of human INSM2

经过测试的应用: ELISA, IHC

推荐稀释比: IHC: 30-150; ELISA: 5000-10000

种属反应性: Rabbit

克隆性: Rabbit Polyclonal

亚型: Immunogen-specific rabbit IgG

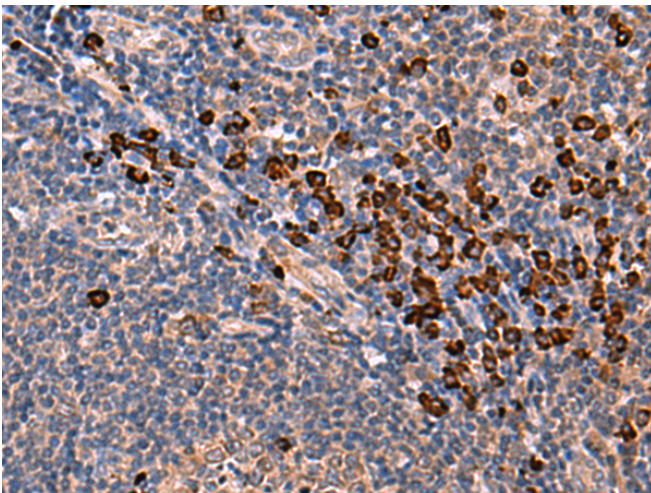
纯化: Antigen affinity purification

种属反应性: Human

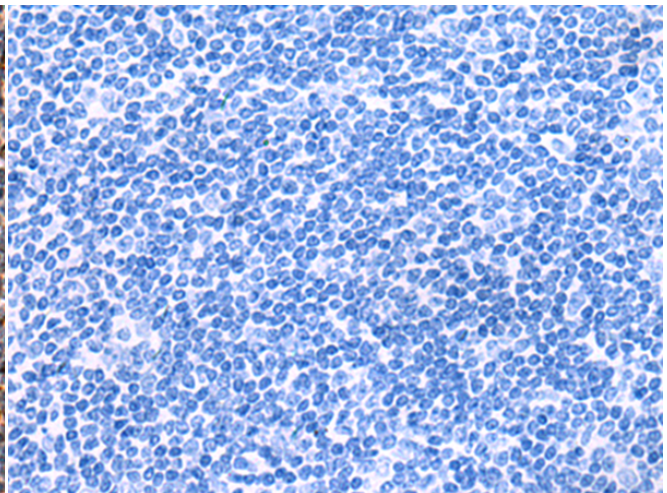
成分: PBS (without Mg²⁺ and Ca²⁺), pH 7.4, 150 mM NaCl, 0.05% Sodium Azide and 40% glycerol

研究领域: Epigenetics and Nuclear Signaling

储存和运输: Store at -20°C. Avoid repeated freezing and thawing



Immunohistochemistry analysis of paraffin embedded Human tonsil tissue using 222230 (INSM2 Antibody) at a dilution of 1/35 (Cytoplasmic staining).



In comparison with the IHC on the left, the same paraffin-embedded Human tonsil tissue is first treated with the synthetic peptide and then with 222230 (Anti-INSM2 Antibody) at dilution 1/35.