

INHA RABBIT PAB

货号: S216584

产品全名: INHA 兔多抗

基因符号

UNIPROT ID: P05111 (Gene Accession - BC006391)

背景: This gene encodes the alpha subunit of inhibins A and B protein complexes. These complexes negatively regulate follicle stimulating hormone secretion from the pituitary gland. Inhibins have also been implicated in regulating numerous cellular processes including cell proliferation, apoptosis, immune response and hormone secretion.

抗原: Fusion protein of human INHA

经过测试的应用: ELISA, IHC

推荐稀释比: IHC: 150-500; ELISA: 1000-5000

种属反应性: Rabbit

克隆性: Rabbit Polyclonal

亚型: Immunogen-specific rabbit IgG

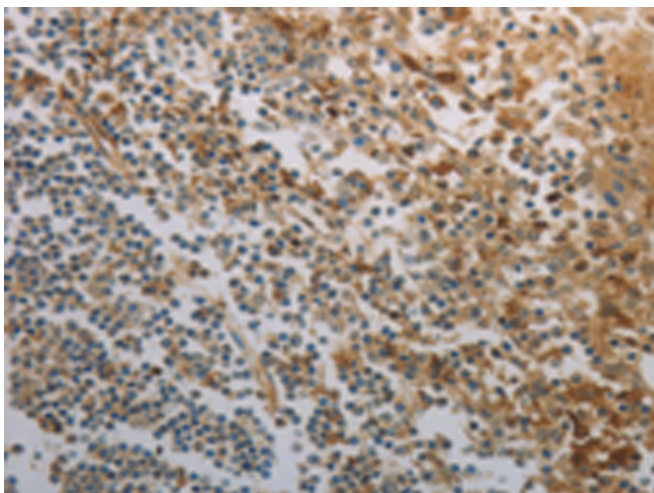
纯化: Antigen affinity purification

种属反应性: Human, Mouse, Rat

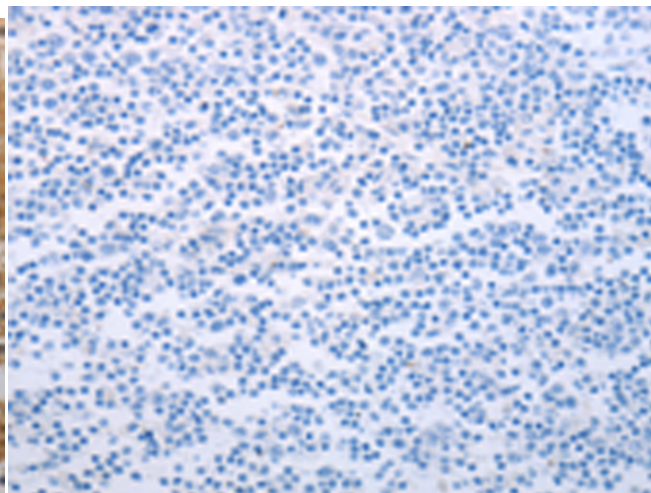
成分: PBS (without Mg²⁺ and Ca²⁺), pH 7.4, 150 mM NaCl, 0.05% Sodium Azide and 40% glycerol

研究领域: Signal Transduction, Cancer

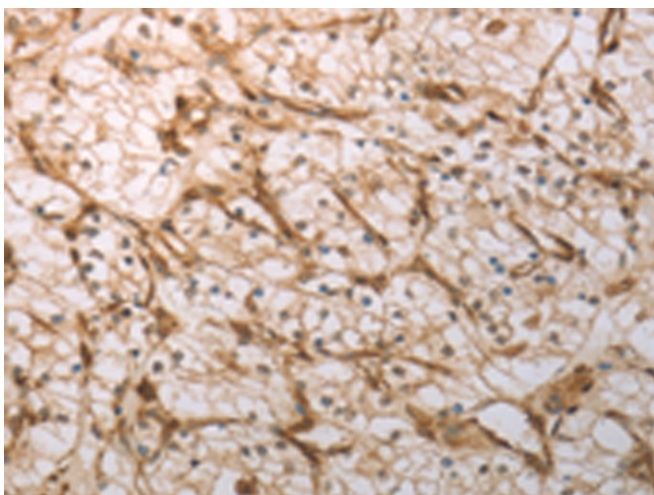
储存和运输: Store at -20°C. Avoid repeated freezing and thawing



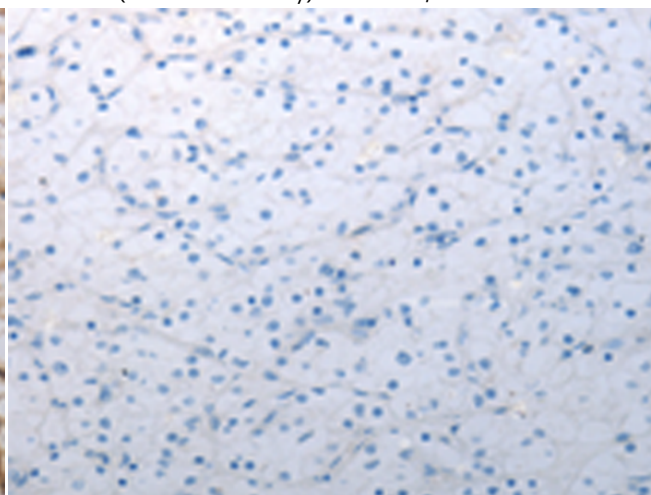
Immunohistochemistry analysis of paraffin embedded Human tonsil tissue using 216584(INHA Antibody) at a dilution of 1/150(Cytoplasm).



In comparison with the IHC on the left, the same paraffin-embedded Human tonsil tissue is first treated with the fusion protein and then with 216584(Anti-INHA Antibody) at dilution 1/150.



The image on the left is immunohistochemistry of paraffin-embedded Human renal cancer tissue using 216584(Anti-INHA Antibody) at a dilution of 1/150.



In comparison with the IHC on the left, the same paraffin-embedded Human renal cancer tissue is first treated with fusion protein and then with D220860(Anti-INHA Antibody) at dilution 1/150.



Product Description

Pioneering GTPase and Oncogene Product Development since 2010
