

INDOLEAMINE 2,3-DIOXYGENASE RABBIT MAB

货号: N262406

产品全名: Indoleamine 2,3-dioxygenase 兔单克隆抗体

基因符号 3-dioxygenase; IDO 1; IDO; IDO1; INDO; indoleamine 2; 3 dioxygenase; Indole 2 3 dioxygenase

UNIPROT ID: P14902

背景: Catalyzes the cleavage of the pyrrol ring of tryptophan and incorporates both atoms of a molecule of oxygen.

抗原: Recombinant protein of human Indoleamine 2,3-dioxygenase

经过测试的应用: WB,IHC-F,IHC-P,ICC/IF,IP

推荐稀释比: WB: 1/500-1/1000 IHC: 1/50-1/100 IF: 1/50-1/200 IP: 1/20

种属反应性: Rabbit

克隆性: Rabbit Monoclonal

克隆编号: R03-5D4

分子量: Calculated MW: 45 kDa; Observed MW: 45 kDa

亚型: IgG

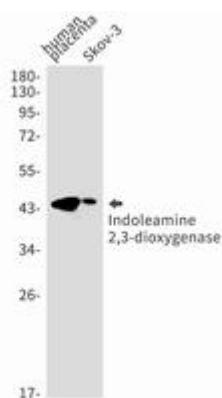
纯化: Affinity Purified

种属反应性: Human

成分: PBS (without Mg²⁺ and Ca²⁺), pH 7.3 containing 50% glycerol, 0.5% BSA and 0.02% sodium azide

研究领域: Signal Transduction

储存和运输: Store at -20°C. Avoid repeated freezing and thawing



Western blot analysis of Indoleamine 2, 3-dioxygenase in Human placenta, SKOV-3 lysates using Indoleamine 2, 3-dioxygenase antibody.