

## INA RABBIT PAB

货号: S220139

产品全名: INA 兔多抗

基因符号: NEF5, NF-66, TXBP-1

**UNIPROT ID:** Q16352 (Gene Accession - NP\_116116)

**背景:** Neurofilaments are type IV intermediate filament heteropolymers composed of light, medium, and heavy chains. Neurofilaments comprise the axoskeleton and they functionally maintain the neuronal caliber. They may also play a role in intracellular transport to axons and dendrites. This gene is a member of the intermediate filament family and is involved in the morphogenesis of neurons.

**抗原:** Synthetic peptide of human INA

**经过测试的应用:** ELISA, WB, IHC

**推荐稀释比:** IHC: 50-200;WB: 1000-5000;ELISA: 2000-10000

**种属反应性:** Rabbit

**克隆性:** Rabbit Polyclonal

**亚型:** Immunogen-specific rabbit IgG

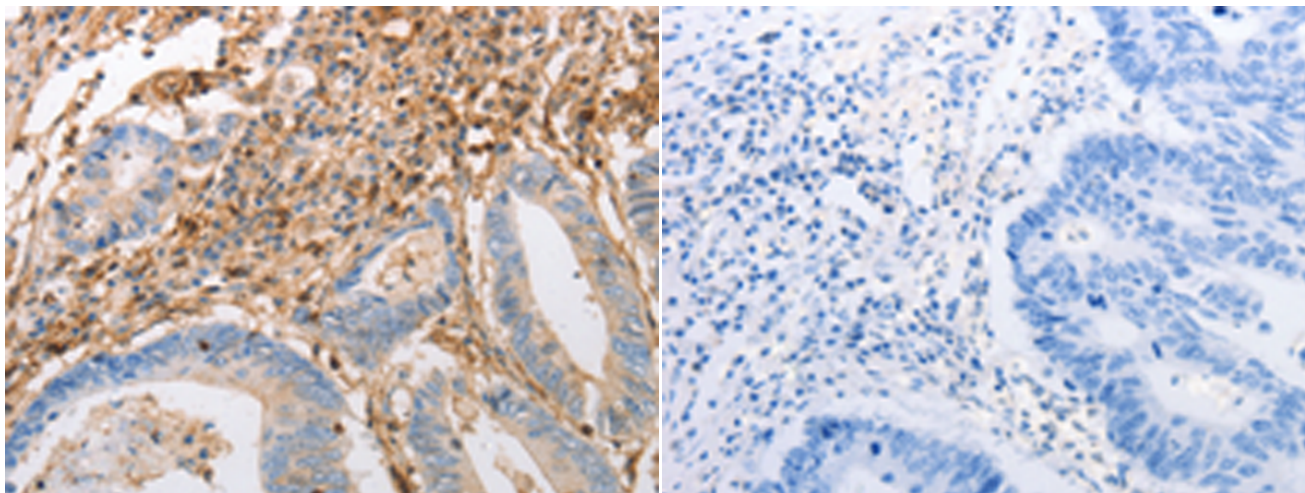
**纯化:** Antigen affinity purification

**种属反应性:** Human, Mouse

**成分:** PBS (without Mg<sup>2+</sup> and Ca<sup>2+</sup>), pH 7.4, 150 mM NaCl, 0.05% Sodium Azide and 40% glycerol

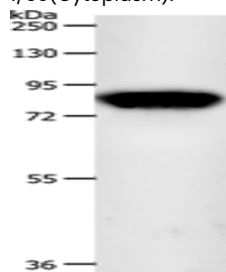
**研究领域:** Neuroscience

**储存和运输:** Store at -20°C. Avoid repeated freezing and thawing



Immunohistochemistry analysis of paraffin embedded Human colon cancer tissue using 220139(INA Antibody) at a dilution of 1/50(Cytoplasm).

In comparison with the IHC on the left, the same paraffin-embedded Human colon cancer tissue is first treated with the synthetic peptide and then with 220139(Anti-INA Antibody) at dilution 1/50.



Gel: 10%SDS-PAGE, Lysate: 50 µg;

Lane: Mouse brain tissue;

Primary antibody: 220139(INA Antibody) at dilution 1/800;

Secondary antibody: Goat anti rabbit IgG at 1/8000 dilution;

Exposure time: 2 seconds