

IMPDH2 RABBIT MAB

货号: N263385

产品全名: IMPDH2 兔单克隆抗体

基因符号 IMPD2; IMPDH 2; IMPDH II; Impdh2

UNIPROT ID: P12268

背景: Rate limiting enzyme in the de novo synthesis of guanine nucleotides and therefore is involved in the regulation of cell growth. It may also have a role in the development of malignancy and the growth progression of some tumors.

抗原: A synthetic peptide of human IMPDH2

经过测试的应用: WB,IHC-F,IHC-P,ICC/IF,IP

推荐稀释比: WB: 1/500-1/1000 IHC: 1/50-1/100 IF: 1/50-1/200 IP: 1/20

种属反应性: Rabbit

克隆性: Rabbit Monoclonal

克隆编号: R06-1B8

分子量: Calculated MW: 56 kDa; Observed MW: 56 kDa

亚型: IgG

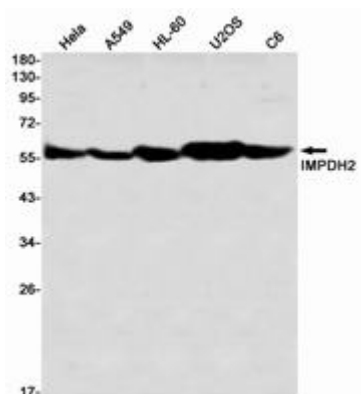
纯化: Affinity Purified

种属反应性: Human, Mouse and Rat

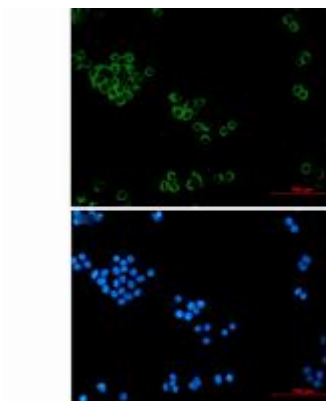
成分: PBS (without Mg²⁺ and Ca²⁺), pH 7.3 containing 50% glycerol, 0.5% BSA and 0.02% sodium azide

研究领域: Signal Transduction

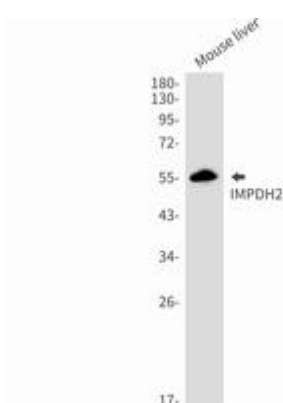
储存和运输: Store at -20°C. Avoid repeated freezing and thawing



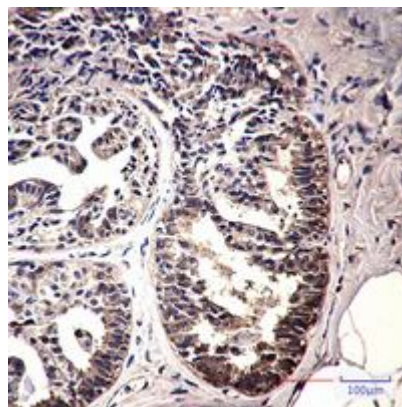
Western blot analysis of IMPDH2 in HeLa, A549, HL-60, U2OS, C6 lysates using IMPDH2 antibody



Immunocytochemistry analysis of IMPDH2 (green) in HeLa using IMPDH2 antibody, and DAPI (blue).



Western blot analysis of IMPDH2 in 3T3, mouse liver lysates using IMPDH2 antibody.



Immunohistochemistry analysis of paraffin-embedded Human breast cancer using IMPDH2 antibody. High-pressure and temperature Sodium Citrate pH 6.0 was used for antigen retrieval.