

ILK RABBIT PAB

货号: N226058

产品全名: ILK 兔多抗

基因符号 ILK; ILK1; ILK2; Integrin-linked protein kinase; 59 kDa
serine/threonine-protein kinase; ILK-1; ILK-2; p59ILK

UNIPROT ID: Q13418

背景: Integrin-linked kinases (ILKs) couple integrins and growth factors to downstream pathways involved in cell survival, cell cycle control, cell-cell adhesion and cell motility. ILK functions as a scaffold bridging the extracellular matrix (ECM) and growth factor receptors to the actin cytoskeleton through interactions with integrin, PINCH (which links ILK to the RTKs via Nck2), CH-ILKBP and affixin.

抗原: A synthetic peptide of human Integrin linked ILK

经过测试的应用: WB, ICC/IF, FC

推荐稀释比: WB: 1/500-1/1000 IF: 1/50-1/200 FC: 1/50-1/100

种属反应性: Rabbit

克隆性: Rabbit Polyclonal

分子量: Calculated MW: 51 kDa; Observed MW: 51 kDa

亚型: IgG

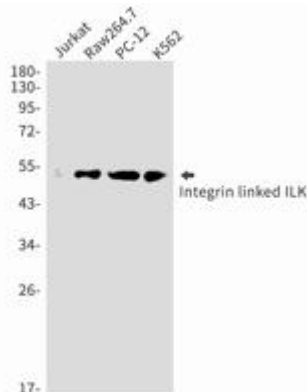
纯化: Affinity Purified

种属反应性: Human, Mouse and Rat

成分: PBS (without Mg²⁺ and Ca²⁺), pH 7.3 containing 50% glycerol, 0.5% BSA and 0.02% sodium azide

研究领域: Signal Transduction

储存和运输: Store at -20°C. Avoid repeated freezing and thawing



Western blot analysis of Integrin linked ILK in Jurkat, Raw264.7, PC-12, K562 lysates using ILK antibody.



Product Description

Pioneering GTPase and Oncogene Product Development since 2010
