

IL36RN RABBIT PAB

货号: S218976

产品全名: IL36RN 兔多抗

基因符号: FIL1; FILID; IL1F5; IL1L1; PSORP; IL1HY1; IL1RP3; IL36RA; IL-36Ra; PSORS14; FIL1(Delta)

UNIPROT ID: Q9UBH0 (Gene Accession - BC024747)

背景: The protein encoded by this gene is a member of the interleukin 1 cytokine family. This cytokine was shown to specifically inhibit the activation of NF-kappaB induced by interleukin 1 family, member 6 (IL1F6). This gene and eight other interleukin 1 family genes form a cytokine gene cluster on chromosome 2. Two alternatively spliced transcript variants encoding the same protein have been reported.

抗原: Fusion protein of human IL36RN

经过测试的应用: ELISA, IHC

推荐稀释比: IHC: Oct-50; ELISA: 5000-10000

种属反应性: Rabbit

克隆性: Rabbit Polyclonal

亚型: Immunogen-specific rabbit IgG

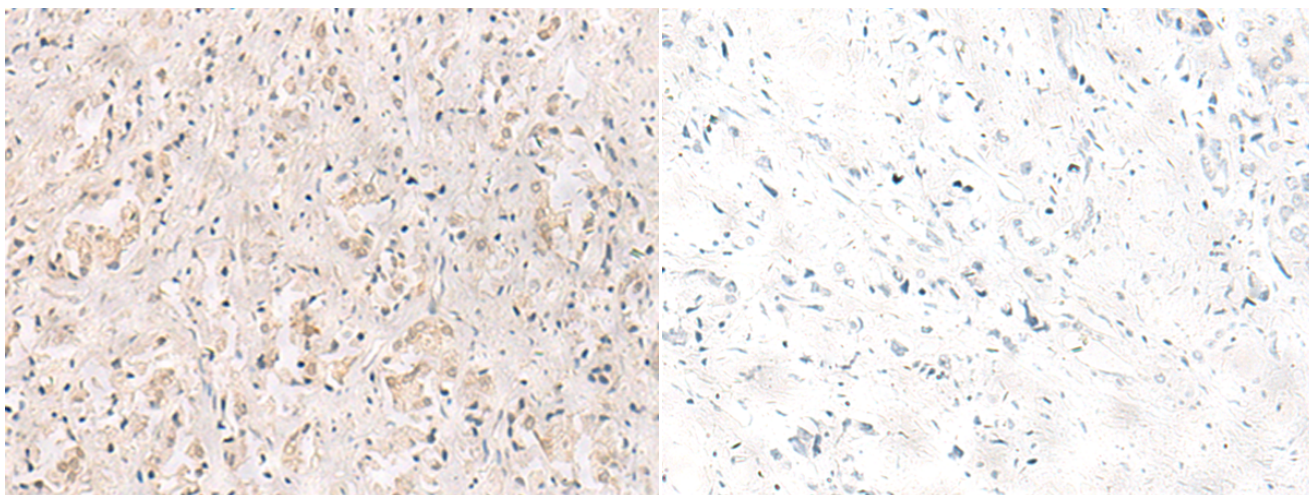
纯化: Antigen affinity purification

种属反应性: Human, Mouse

成分: PBS (without Mg²⁺ and Ca²⁺), pH 7.4, 150 mM NaCl, 0.05% Sodium Azide and 40% glycerol

研究领域: Immunology

储存和运输: Store at -20°C. Avoid repeated freezing and thawing



Immunohistochemistry analysis of paraffin embedded Human prostate cancer tissue using 218976(IL36RN Antibody) at a dilution of 1/25(Cytoplasm).

In comparison with the IHC on the left, the same paraffin-embedded Human prostate cancer tissue is first treated with the fusion protein and then with 218976(Anti-IL36RN Antibody) at dilution 1/25.