

IL23R RABBIT PAB

货号: S216310

产品全名: IL23R 兔多抗

基因符号

UNIPROT ID: Q5VWK5 (Gene Accession - BC040720)

背景: The protein encoded by this gene is a subunit of the receptor for IL23A/IL23. This protein pairs with the receptor molecule IL12RB1/IL12Rbeta1, and both are required for IL23A signaling. This protein associates constitutively with Janus kinase 2 (JAK2), and also binds to transcription activator STAT3 in a ligand-dependent manner.

抗原: Fusion protein of human IL23R

经过测试的应用: ELISA, WB, IHC

推荐稀释比: IHC: 20-50;WB: 500-2000;ELISA: 500-5000

种属反应性: Rabbit

克隆性: Rabbit Polyclonal

亚型: Immunogen-specific rabbit IgG

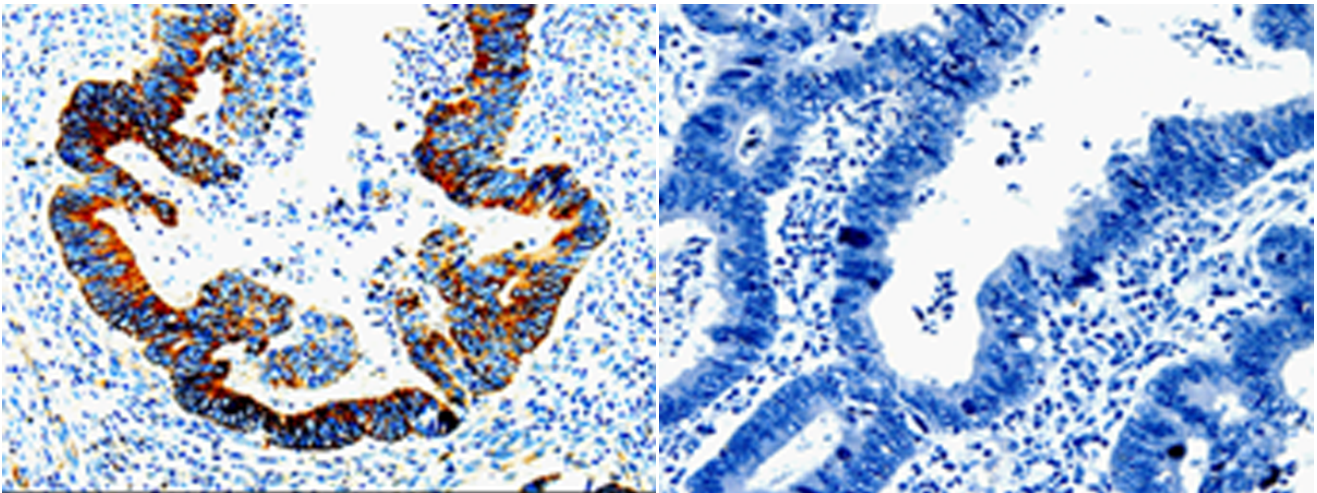
纯化: Antigen affinity purification

种属反应性: Human

成分: PBS (without Mg²⁺ and Ca²⁺), pH 7.4, 150 mM NaCl, 0.05% Sodium Azide and 40% glycerol

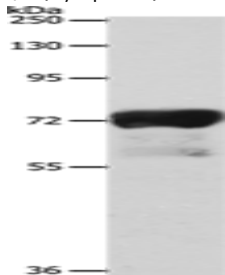
研究领域: Signal Transduction, Epigenetics and Nuclear Signaling, Immunology

储存和运输: Store at -20°C. Avoid repeated freezing and thawing



Immunohistochemistry analysis of paraffin embedded Human rectal cancer tissue using 216310(IL23R Antibody) at a dilution of 1/10(Cytoplasm).

In comparison with the IHC on the left, the same paraffin-embedded Human rectal cancer tissue is first treated with the fusion protein and then with 216310(Anti-IL23R Antibody) at dilution 1/10.



Gel: 8%SDS-PAGE, Lysate: 40 µg;
Lane: Human sigmoid tissue;
Primary antibody: 216310(IL23R Antibody) at dilution 1/300;
Secondary antibody: Goat anti rabbit IgG at 1/8000 dilution;
Exposure time: 30 seconds