

IL20 RABBIT PAB

货号: S221127

产品全名: IL20 兔多抗

基因符号 IL-20; IL10D; ZCYTO10

UNIPROT ID: Q9NYY1 (Gene Accession - NP_061194)

背景: The protein encoded by this gene is a cytokine structurally related to interleukin 10 (IL10). This cytokine has been shown to transduce its signal through signal transducer and activator of transcription 3 (STAT3) in keratinocytes. A specific receptor for this cytokine is found to be expressed in skin and upregulated dramatically in psoriatic skin, suggesting a role for this protein in epidermal function and psoriasis.

抗原: Synthetic peptide of human IL20

经过测试的应用: ELISA, IHC

推荐稀释比: IHC: 25-100; ELISA: 2000-5000

种属反应性: Rabbit

克隆性: Rabbit Polyclonal

亚型: Immunogen-specific rabbit IgG

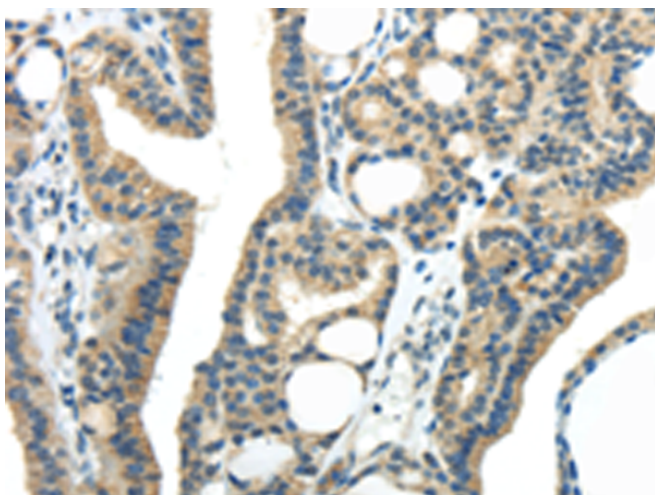
纯化: Antigen affinity purification

种属反应性: Human

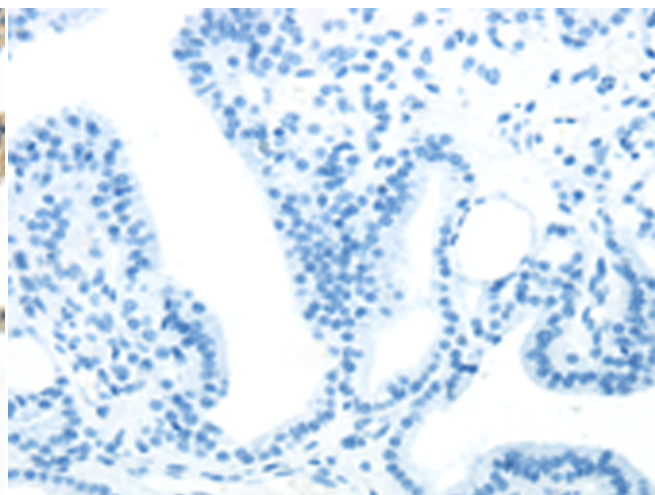
成分: PBS (without Mg²⁺ and Ca²⁺), pH 7.4, 150 mM NaCl, 0.05% Sodium Azide and 40% glycerol

研究领域: Immunology

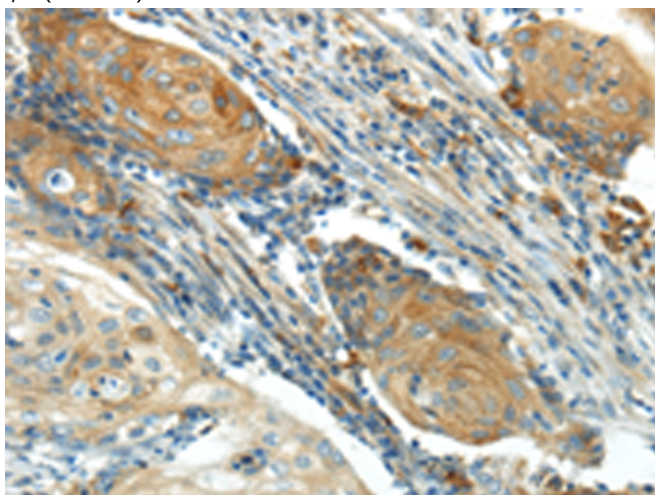
储存和运输: Store at -20°C. Avoid repeated freezing and thawing



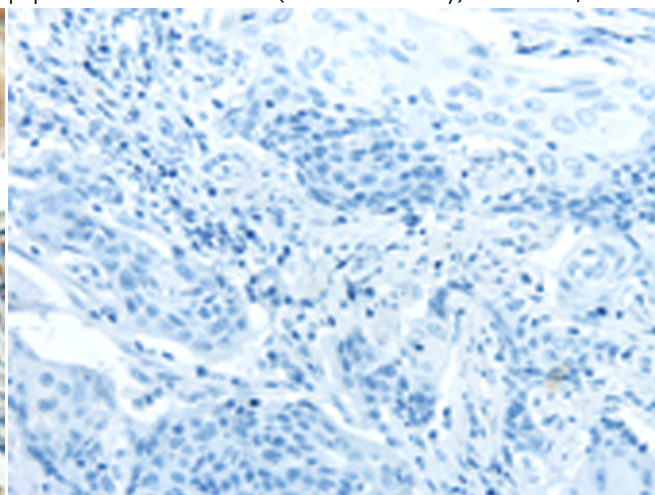
Immunohistochemistry analysis of paraffin embedded Human thyroid cancer tissue using 221127 (IL20 Antibody) at a dilution of 1/35 (Secreted).



In comparison with the IHC on the left, the same paraffin-embedded Human thyroid cancer tissue is first treated with the synthetic peptide and then with 221127 (Anti-IL20 Antibody) at dilution 1/35.



The image on the left is immunohistochemistry of paraffin-embedded Human cervical cancer tissue using 221127 (Anti-IL20 Antibody) at a dilution of 1/35.



In comparison with the IHC on the left, the same paraffin-embedded Human cervical cancer tissue is first treated with synthetic peptide and then with D262510 (Anti-IL20 Antibody) at dilution 1/35.



Product Description

Pioneering GTPase and Oncogene Product Development since 2010
