

## IL20 RABBIT PAB

货号: S216579

产品全名: IL20 兔多抗

基因符号 IL-20; IL10D; ZCYTO10

**UNIPROT ID:** Q9NYY1 (Gene Accession - BC069311)

**背景:** The protein encoded by this gene is a cytokine structurally related to interleukin 10 (IL10). This cytokine has been shown to transduce its signal through signal transducer and activator of transcription 3 (STAT3) in keratinocytes. A specific receptor for this cytokine is found to be expressed in skin and upregulated dramatically in psoriatic skin, suggesting a role for this protein in epidermal function and psoriasis.

**抗原:** Full length fusion 蛋白

**经过测试的应用:** ELISA, IHC

**推荐稀释比:** IHC: 25-100; ELISA: 5000-10000

**种属反应性:** Rabbit

**克隆性:** Rabbit Polyclonal

**亚型:** Immunogen-specific rabbit IgG

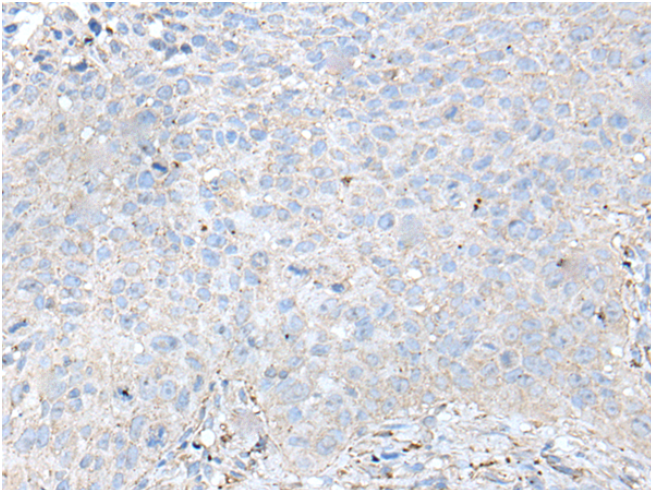
**纯化:** Antigen affinity purification

**种属反应性:** Human

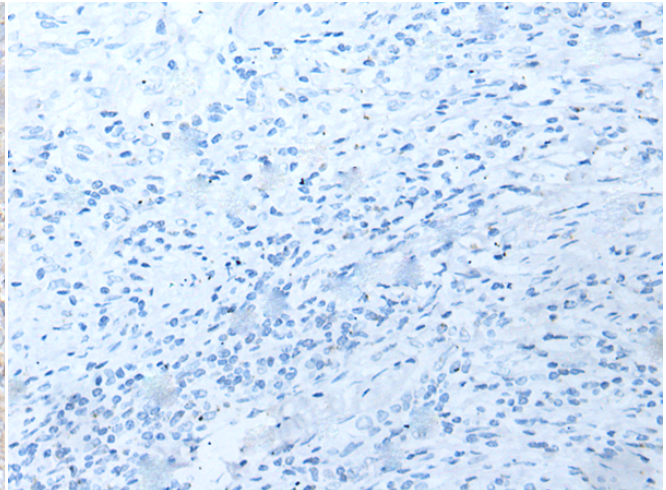
**成分:** PBS (without Mg<sup>2+</sup> and Ca<sup>2+</sup>), pH 7.4, 150 mM NaCl, 0.05% Sodium Azide and 40% glycerol

**研究领域:** Immunology

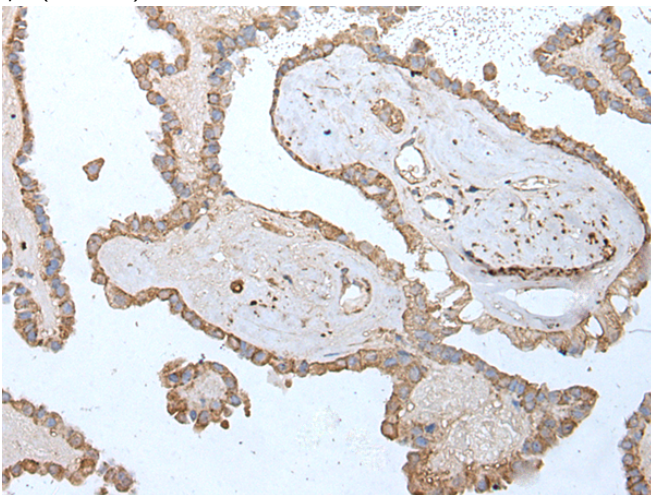
**储存和运输:** Store at -20°C. Avoid repeated freezing and thawing



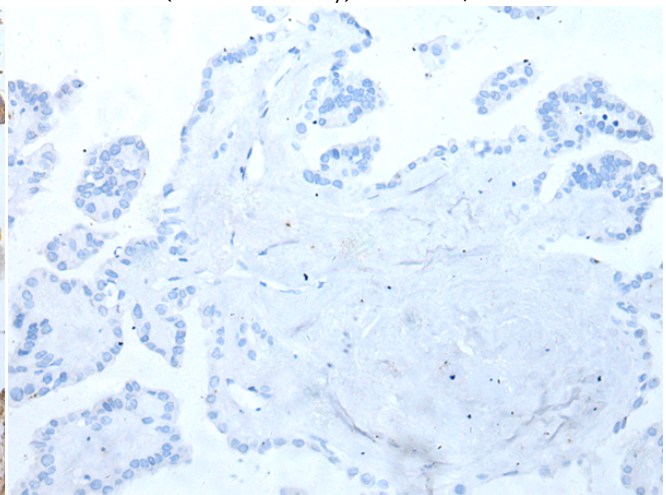
Immunohistochemistry analysis of paraffin embedded Human lung cancer tissue using 216579(IL20 Antibody) at a dilution of 1/30 (Secreted).



In comparison with the IHC on the left, the same paraffin-embedded Human lung cancer tissue is first treated with the fusion protein and then with 216579(Anti-IL20 Antibody) at dilution 1/30.



The image on the left is immunohistochemistry of paraffin-embedded Human thyroid cancer tissue using 216579(Anti-IL20 Antibody) at a dilution of 1/30.



In comparison with the IHC on the left, the same paraffin-embedded Human thyroid cancer tissue is first treated with fusion protein and then with D220835(Anti-IL20 Antibody) at dilution 1/30.



# Product Description

Pioneering GTPase and Oncogene Product Development since 2010

---