

IL17B RABBIT PAB

货号: S221971

产品全名: IL17B 兔多抗

基因符号: NIRF; IL-20; IL-17B; ZCYTO7

UNIPROT ID: Q9UHF5 (Gene Accession - NP_055258)

背景: The protein encoded by this gene is a T cell-derived cytokine that shares sequence similarity with IL17. This cytokine was reported to stimulate the release of TNF alpha (TNF) and IL1 beta (IL1B) from a monocytic cell line. Immunohistochemical analysis of several nerve tissues indicated that this cytokine is primarily localized to neuronal cell bodies. Alternative splicing results in multiple splice variants.

抗原: Synthetic peptide of human IL17B

经过测试的应用: ELISA, WB, IHC

推荐稀释比: IHC: 25-100;WB: 200-1000;ELISA: 5000-10000

种属反应性: Rabbit

克隆性: Rabbit Polyclonal

亚型: Immunogen-specific rabbit IgG

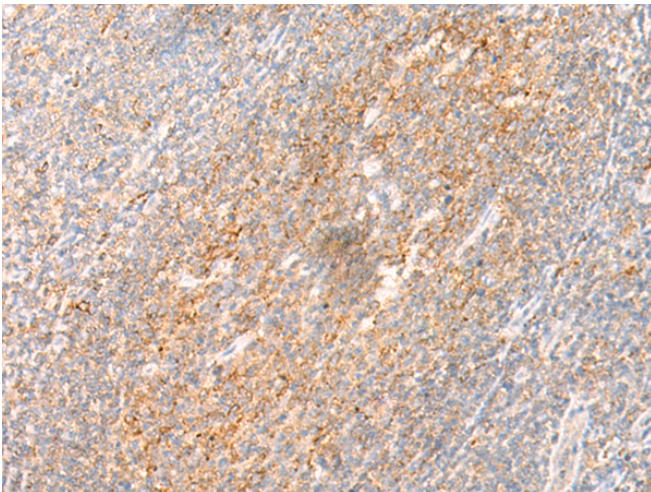
纯化: Antigen affinity purification

种属反应性: Human, Mouse, Rat

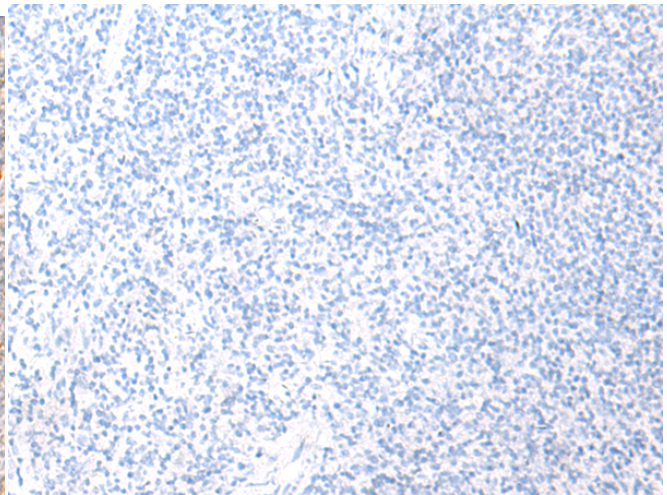
成分: PBS (without Mg²⁺ and Ca²⁺), pH 7.4, 150 mM NaCl, 0.05% Sodium Azide and 40% glycerol

研究领域: Immunology

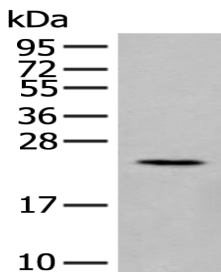
储存和运输: Store at -20°C. Avoid repeated freezing and thawing



Immunohistochemistry analysis of paraffin embedded Human tonsil tissue using 221971(IL17B Antibody) at a dilution of 1/20 (Secreted).



In comparison with the IHC on the left, the same paraffin-embedded Human tonsil tissue is first treated with the synthetic peptide and then with 221971(Anti-IL17B Antibody) at dilution 1/20.



Gel: 12%SDS-PAGE, Lysate: 40 µg;
Lane: Rat pancreas tissue lysate;
Primary antibody: 221971(IL17B Antibody) at dilution 1/200;
Secondary antibody: Goat anti rabbit IgG at 1/8000 dilution;
Exposure time: 3 minutes