

## IL-28 RABBIT PAB

货号: N225009

产品全名: IL-28 兔多抗

基因符号 IL-28; IL28A; IFNL2; ZCYTO20; Interleukin-28A; IL-28A; Cytokine Zcyto20; Interferon lambda-2; IFN-lambda-2

**UNIPROT ID:** Q8IZJ0

背景: Cytokine with antiviral, antitumour and immunomodulatory activities.

抗原: The antiserum was produced against synthesized peptide derived from the C-terminal region of human IL28A. AA range:131-180

经过测试的应用: WB,IHC-P,ELISA

推荐稀释比: WB: 1/500-1/1000 IHC: 1/50-1/100 ELISA: 1/10000

种属反应性: Rabbit

克隆性: Rabbit Polyclonal

分子量: Calculated MW: 22 kDa; Observed MW: 25 kDa

亚型: IgG

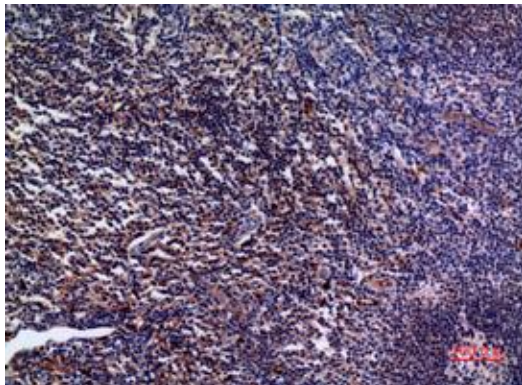
纯化: Affinity Purified

种属反应性: Human

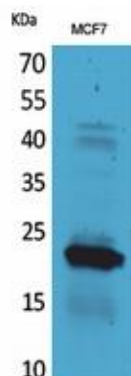
成分: PBS (without Mg<sup>2+</sup> and Ca<sup>2+</sup>), pH 7.3 containing 50% glycerol, 0.5% BSA and 0.02% sodium azide

研究领域: Immunology

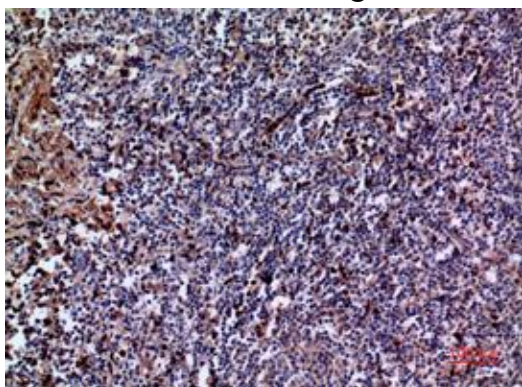
储存和运输: Store at -20°C. Avoid repeated freezing and thawing



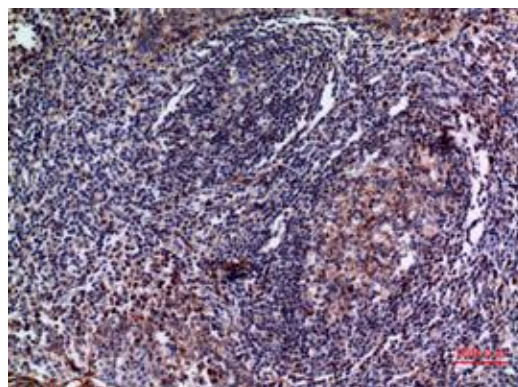
Immunohistochemistry analysis of paraffin-embedded Human tonsil using IL-28 antibody. High-pressure and temperature Sodium Citrate pH 6.0 was used for antigen retrieval.



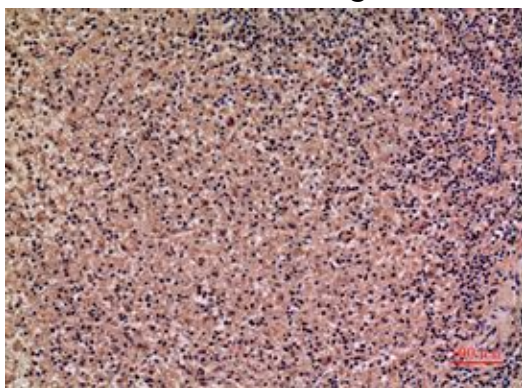
Western blot analysis of IL-28 in MCF-7 lysates using IL-28 antibody.



Immunohistochemistry analysis of paraffin-embedded Human tonsil using IL-28 antibody. High-pressure and temperature Sodium Citrate pH 6.0 was used for antigen retrieval.



Immunohistochemistry analysis of paraffin-embedded Human tonsil using IL-28 antibody. High-pressure and temperature Sodium Citrate pH 6.0 was used for antigen retrieval.



Immunohistochemistry analysis of paraffin-embedded Human spleen using IL-28 antibody. High-pressure and temperature Sodium Citrate pH 6.0 was used for antigen retrieval.



# Product Description

Pioneering GTPase and Oncogene Product Development since 2010

---