

IL-22 RABBIT PAB

货号: N225206

产品全名: IL-22 兔多抗

基因符号 IL-22; IL22; ILTIF; ZCYTO18; Interleukin-22; IL-22; Cytokine Zcyto18; IL-10-related T-cell-derived-inducible factor; IL-TIF

UNIPROT ID: Q9GZX6

背景: Cytokine that contributes to the inflammatory response in vivo.

抗原: The antiserum was produced against synthesized peptide derived from the C-terminal region of human IL22. AA range:121-170

经过测试的应用: WB,ELISA

推荐稀释比: WB: 1/500-1/1000 ELISA: 1/10000

种属反应性: Rabbit

克隆性: Rabbit Polyclonal

分子量: Calculated MW: 20 kDa; Observed MW: 20 kDa

亚型: IgG

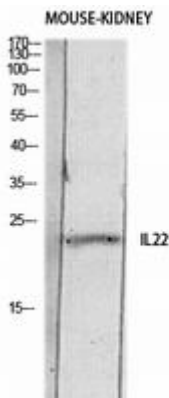
纯化: Affinity Purified

种属反应性: Human, Mouse and Rat

成分: PBS (without Mg²⁺ and Ca²⁺), pH 7.3 containing 50% glycerol, 0.5% BSA and 0.02% sodium azide

研究领域: Immunology

储存和运输: Store at -20°C. Avoid repeated freezing and thawing



Western blot analysis of IL-22 in mouse KIDNEY lysates using IL-22 antibody.