

IL-18 RECEPTOR ACCESSORY PROTEIN RABBIT PAB

货号: N225083

产品全名: IL-18 Receptor Accessory Protein 兔多抗

基因符号 IL-18 Receptor Accessory Protein; ACPL; CD218b; IL18RB;
CDw218b

UNIPROT ID: O95256

背景: Interleukin 18 receptor accessory protein, also known as IL18RAP and CDw218b (cluster of differentiationw218b), is a human gene. The protein encoded by this gene is an accessory subunit of the heterodimeric receptor for IL18. This protein enhances the IL18 binding activity of IL18R1 (IL1RRP), a ligand binding subunit of IL18 receptor. The coexpression of IL18R1 and this protein is required for the activation of NF- κ B and MAPK8 (JNK) in response to IL18.

抗原: Synthetic peptide from human protein at AA range: 291-340

经过测试的应用: IHC-P,ELISA

推荐稀释比: IHC: 1/50-1/100 ELISA: 1/10000

种属反应性: Rabbit

克隆性: Rabbit Polyclonal

分子量: -

亚型: IgG

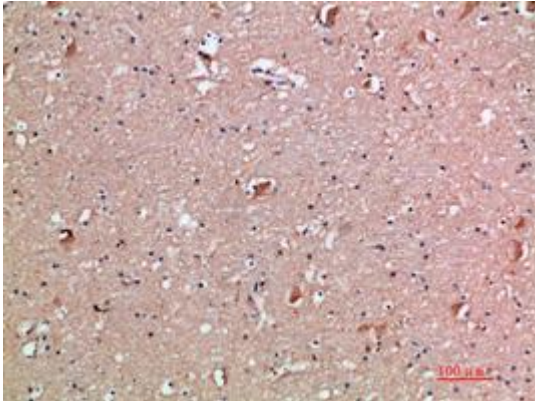
纯化: Affinity Purified

种属反应性: Human

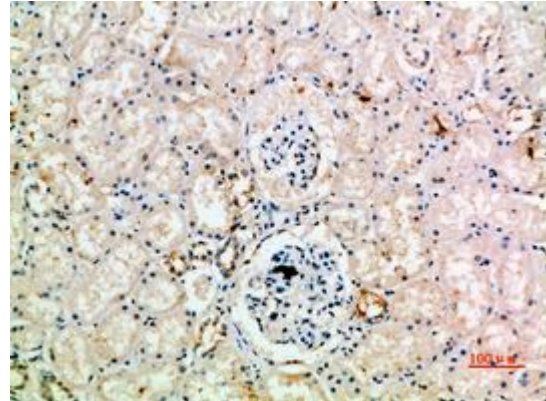
成分: PBS (without Mg²⁺ and Ca²⁺), pH 7.3 containing 50% glycerol, 0.5% BSA and 0.02% sodium azide

研究领域: Immunology

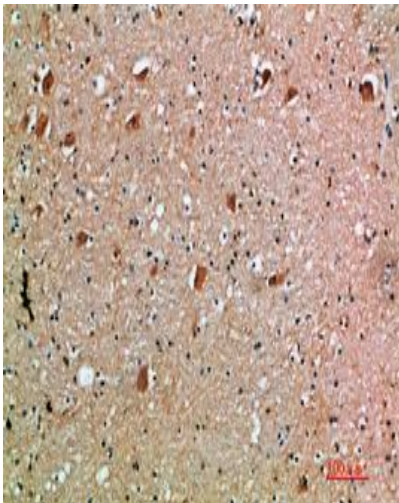
储存和运输: Store at -20°C. Avoid repeated freezing and thawing



Immunohistochemical analysis of paraffin-embedded Human tonsils using IL-18 Receptor Accessory Protein antibody. High-pressure and temperature Sodium Citrate pH 6.0 was used for antigen retrieval.



Immunohistochemistry analysis of paraffin-embedded Human kidney using IL-18 Receptor Accessory Protein antibody. High-pressure and temperature Sodium Citrate pH 6.0 was used for antigen retrieval.



Immunohistochemistry analysis of paraffin-embedded Human brain using IL-18 Receptor Accessory Protein antibody. High-pressure and temperature Sodium Citrate pH 6.0 was used for antigen retrieval.