

## IL-1 RECEPTOR ACCESSORY PROTEIN RABBIT MAB

货号: N263383

产品全名: IL-1 Receptor Accessory Protein 兔单克隆抗体

基因符号 IL-1 Receptor Accessory Protein; IL1R3; C3orf13; IL-1RAcP

**UNIPROT ID:** Q9NPH3

**背景:** Interleukin 1 induces synthesis of acute phase and proinflammatory proteins during infection, tissue damage, or stress, by forming a complex at the cell membrane with an interleukin 1 receptor and an accessory protein. This gene encodes the interleukin 1 receptor accessory protein. The protein is a necessary part of the interleukin 1 receptor complex which initiates signalling events that result in the activation of interleukin 1-responsive genes. Alternative splicing of this gene results in two transcript variants encoding two different isoforms, one membrane-bound and one soluble. The ratio of soluble to membrane-bound forms increases during acute-phase induction or stress.

**抗原:** Recombinant protein of human IL-1RAcP

**经过测试的应用:** WB,IP

**推荐稀释比:** WB: 1/500-1/1000 IP: 1/20

**种属反应性:** Rabbit

**克隆性:** Rabbit Monoclonal

**克隆编号:** R05-3B8

**分子量:** Calculated MW: 65 kDa; Observed MW: 78 kDa

**亚型:** IgG

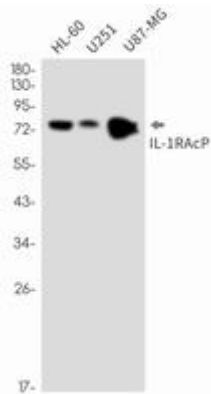
**纯化:** Affinity Purified

**种属反应性:** Human

**成分:** PBS (without Mg<sup>2+</sup> and Ca<sup>2+</sup>), pH 7.3 containing 50% glycerol, 0.5% BSA and 0.02% sodium azide

**研究领域:** Immunology

**储存和运输:** Store at -20°C. Avoid repeated freezing and thawing



Western blot analysis of IL-1RAcP in HL-60, U251, U87-MG lysates using IL-1 Receptor Accessory Protein antibody.