

IKBKB RABBIT PAB

货号: S220068

产品全名: IKBKB 兔多抗

基因符号: IKK2; IKKB; NFKB1KB; IKK-beta

UNIPROT ID: O14920 (Gene Accession - NP_001547)

背景: The protein encoded by this gene phosphorylates the inhibitor in the inhibitor/NF-kappa-B complex causing dissociation of the inhibitor and activation of NF-kappa-B. The encoded protein itself is found in a complex of proteins. Several transcript variants, some protein-coding and some not, have been found for this gene.

抗原: Synthetic peptide of human IKBKB

经过测试的应用: ELISA, IHC

推荐稀释比: IHC: 25-100; ELISA: 1000-2000

种属反应性: Rabbit

克隆性: Rabbit Polyclonal

亚型: Immunogen-specific rabbit IgG

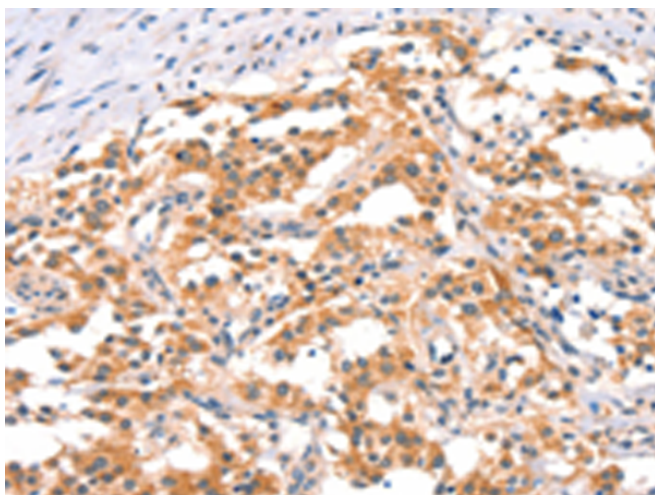
纯化: Antigen affinity purification

种属反应性: Human

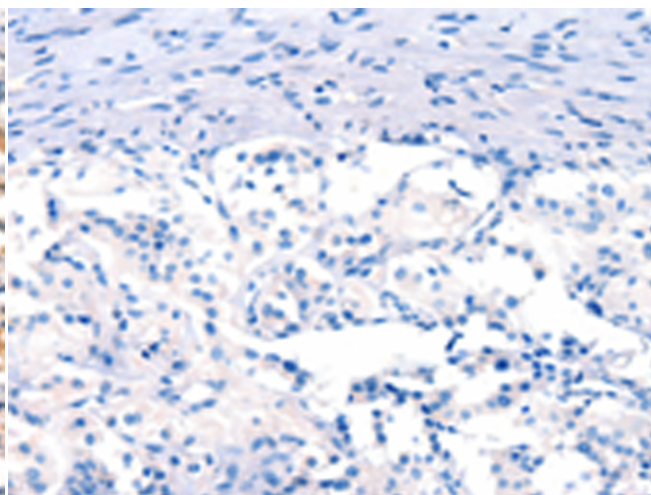
成分: PBS (without Mg²⁺ and Ca²⁺), pH 7.4, 150 mM NaCl, 0.05% Sodium Azide and 40% glycerol

研究领域: Signal Transduction, Epigenetics and Nuclear Signaling, Cardiovascular, Immunology

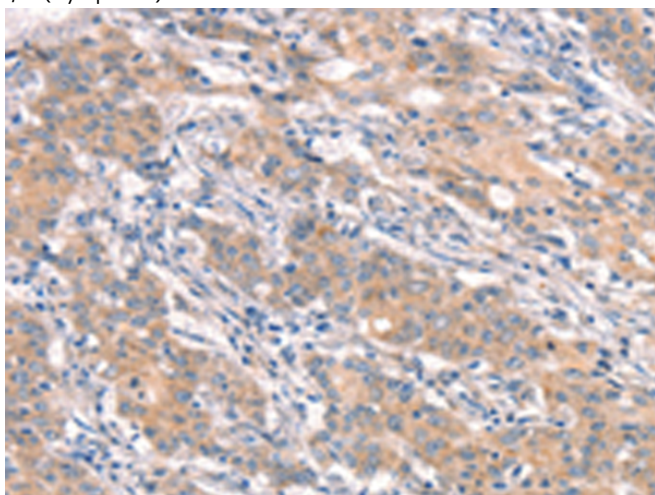
储存和运输: Store at -20°C. Avoid repeated freezing and thawing



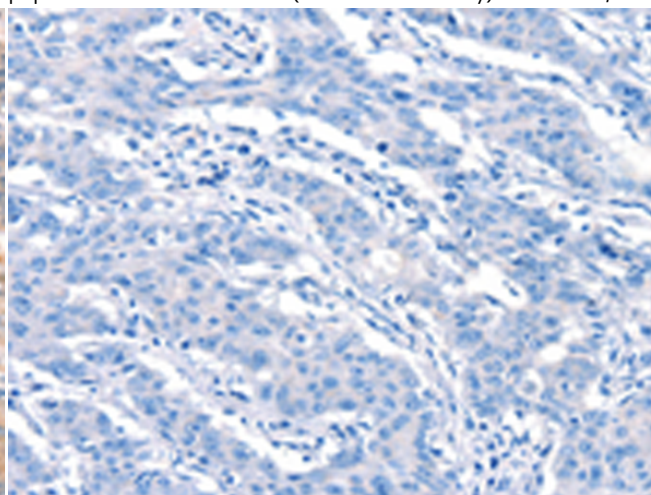
Immunohistochemistry analysis of paraffin embedded Human thyroid cancer tissue using 220068 (IKBKB Antibody) at a dilution of 1/25 (Cytoplasm).



In comparison with the IHC on the left, the same paraffin-embedded Human thyroid cancer tissue is first treated with the synthetic peptide and then with 220068 (Anti-IBKKB Antibody) at dilution 1/25.



The image on the left is immunohistochemistry of paraffin-embedded Human gastric cancer tissue using 220068 (Anti-IBKKB Antibody) at a dilution of 1/25.



In comparison with the IHC on the left, the same paraffin-embedded Human gastric cancer tissue is first treated with synthetic peptide and then with D260898 (Anti-IBKKB Antibody) at dilution 1/25.



Product Description

Pioneering GTPase and Oncogene Product Development since 2010
