

IKB ALPHA RABBIT MAB

货号: N261756

产品全名: IKB alpha 兔单克隆抗体

基因符号 NFKBIA; IKBA; MAD3; NFKBI; NF-kappa-B inhibitor alpha; I-kappa-B-alpha; Ikb-alpha; IkappaBalpha; Major histocompatibility complex enhancer-binding protein MAD3

UNIPROT ID: P25963

背景: NFKB1 (MIM 164011) or NFKB2 (MIM 164012) is bound to REL (MIM 164910), RELA (MIM 164014), or RELB (MIM 604758) to form the NFKB complex. The NFKB complex is inhibited by I-kappa-B proteins (NFKBIA or NFKBIB, MIM 604495), which inactivate NF-kappa-B by trapping it in the cytoplasm.

抗原: A synthetic peptide of human IKB alpha

经过测试的应用: WB,IHC-P,IP

推荐稀释比: WB: 1/500-1/1000 IHC: 1/50-1/100 IP: 1/20

种属反应性: Rabbit

克隆性: Rabbit Monoclonal

克隆编号: R08-9E4

分子量: Calculated MW: 36 kDa; Observed MW: 39 kDa

亚型: IgG

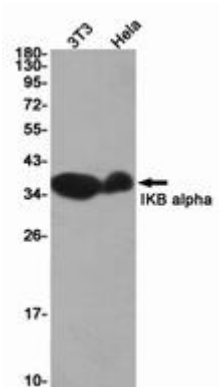
纯化: Affinity Purified

种属反应性: Human, Mouse and Rat

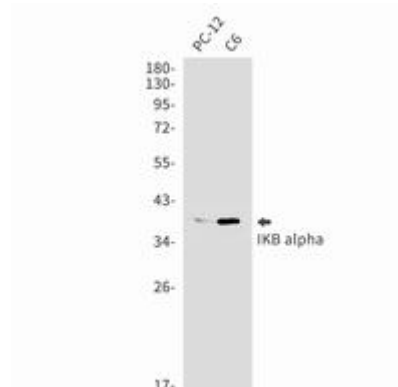
成分: PBS (without Mg²⁺ and Ca²⁺), pH 7.3 containing 50% glycerol, 0.5% BSA and 0.02% sodium azide

研究领域: Epigenetics and Nuclear Signaling

储存和运输: Store at -20°C. Avoid repeated freezing and thawing



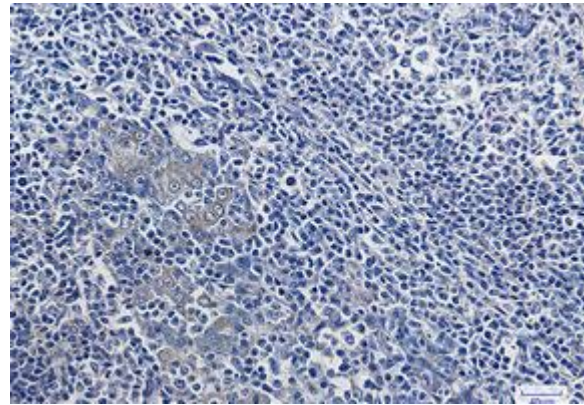
Western blot analysis of IKB alpha in 3T3, Hela lysates using IKB alpha antibody



Western blot analysis of IKB alpha in PC-12, C6 lysates using IKB alpha antibody.



Western blot analysis of IKB alpha in Raw264.7 lysates using IKB alpha antibody.



Immunohistochemistry analysis of paraffin-embedded Human tonsil using IKB alpha antibody. High-pressure and temperature Sodium Citrate pH 6.0 was used for antigen retrieval.