

IGSF11 RABBIT PAB

货号: S221442

产品全名: IGSF11 兔多抗

基因符号: CT119; VSIG3; Igsf13; BT-IgSF; CXADR1

UNIPROT ID: Q5DX21 (Gene Accession - NP_001015887)

背景: IGSF11 is an immunoglobulin (Ig) superfamily member that is preferentially expressed in brain and testis. It shares significant homology with coxsackievirus and adenovirus receptor (CXADR; MIM 602621) and endothelial cell-selective adhesion molecule (ESAM).

抗原: Synthetic peptide of human IGSF11

经过测试的应用: ELISA, IHC

推荐稀释比: IHC: 25-100; ELISA: 5000-10000

种属反应性: Rabbit

克隆性: Rabbit Polyclonal

亚型: Immunogen-specific rabbit IgG

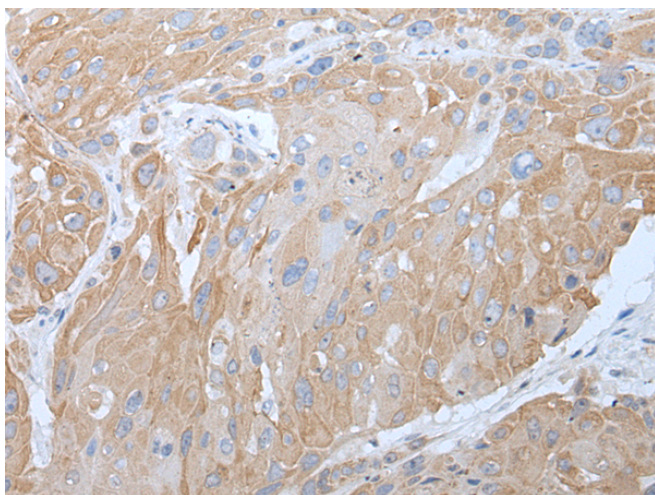
纯化: Antigen affinity purification

种属反应性: Human

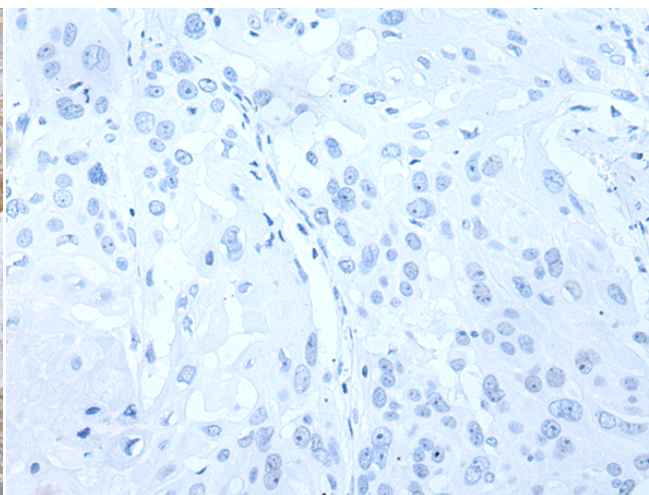
成分: PBS (without Mg²⁺ and Ca²⁺), pH 7.4, 150 mM NaCl, 0.05% Sodium Azide and 40% glycerol

研究领域: Cancer, Immunology

储存和运输: Store at -20°C. Avoid repeated freezing and thawing



Immunohistochemistry analysis of paraffin embedded Human esophagus cancer tissue using 221442 (IGSF11 Antibody) at a dilution of 1/25 (Cell membrane).



In comparison with the IHC on the left, the same paraffin-embedded Human esophagus cancer tissue is first treated with the synthetic peptide and then with 221442 (Anti-IGSF11 Antibody) at dilution 1/25.