

## IGSF10 RABBIT PAB

货号: S216574

产品全名: IGSF10 兔多抗

基因符号: CMF608

**UNIPROT ID:** Q6WR10 (Gene Accession - BC031063)

背景: Ig (immunoglobulin) superfamily members exhibit functional characteristics including immune responses, growth factor signaling and cell adhesion. IGSF10 (immunoglobulin superfamily, member 10), also known as Calvaria mechanical force protein 608 (CMF608), is a 2,623 amino acid secreted protein that contains an N-terminal signal peptide, six leucine-rich repeats (LRRs), and 12 immunoglobulin-like repeats. IGSF10 exists as multiple alternatively spliced isoforms, and is expressed in bone. Specifically, expression of IGSF10 is limited to mesenchymal osteochondroprogenitors with fibroblast-like morphology, where it is thought to be involved in the maintenance of the osteochondroprogenitor cells pool and its down-regulation precedes terminal differentiation.

抗原: Fusion protein of human IGSF10

经过测试的应用: ELISA, IHC

推荐稀释比: IHC: 50-200; ELISA: 1000-5000

种属反应性: Rabbit

克隆性: Rabbit Polyclonal

亚型: Immunogen-specific rabbit IgG

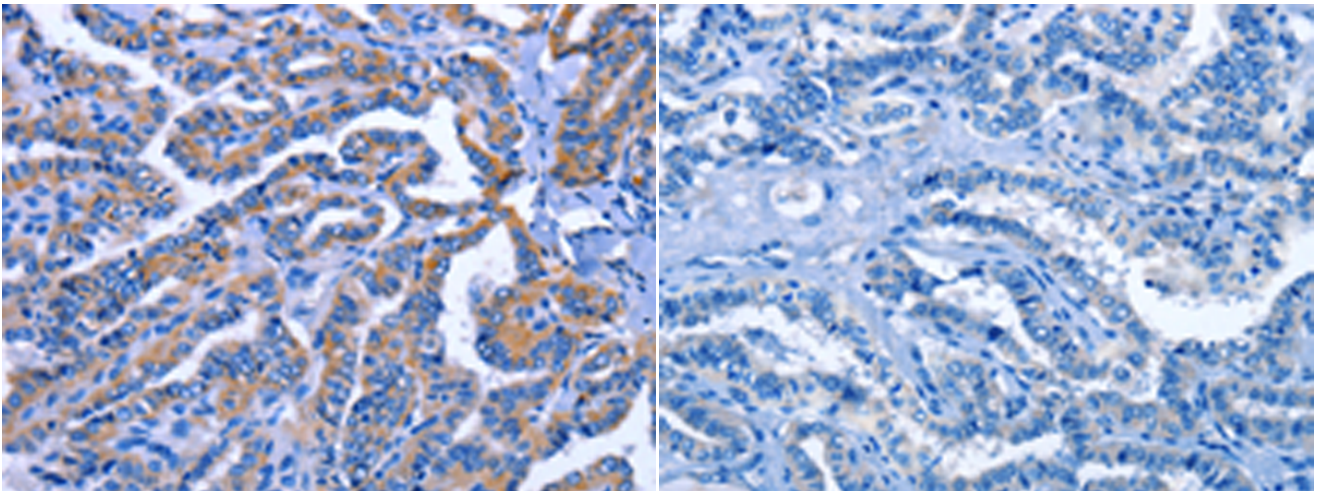
纯化: Antigen affinity purification

种属反应性: Human

成分: PBS (without Mg<sup>2+</sup> and Ca<sup>2+</sup>), pH 7.4, 150 mM NaCl, 0.05% Sodium Azide and 40% glycerol

研究领域: Signal Transduction, Cancer, Immunology, Developmental Biology

储存和运输: Store at -20°C. Avoid repeated freezing and thawing



Immunohistochemistry analysis of paraffin embedded Human thyroid cancer tissue using 216574(IGSF10 Antibody) at a dilution of 1/60(Cytoplasm).

In comparison with the IHC on the left, the same paraffin-embedded Human thyroid cancer tissue is first treated with the fusion protein and then with 216574(Anti-IGSF10 Antibody) at dilution 1/60.