

## IGHG1 RABBIT PAB

货号: S216066

产品全名: IGHG1 兔多抗

基因符号

**UNIPROT ID:** P01857 (Gene Accession - Hs.510635)

背景: The function of this protein remains unknown.

抗原: Synthetic peptide of human IGHG1

经过测试的应用: ELISA, IHC

推荐稀释比: IHC: 50-200; ELISA: 5000-10000

种属反应性: Rabbit

克隆性: Rabbit Polyclonal

亚型: Immunogen-specific rabbit IgG

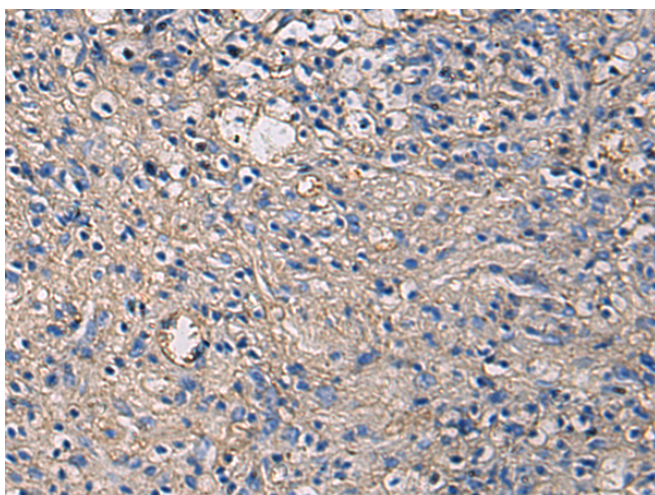
纯化: Antigen affinity purification

种属反应性: Human

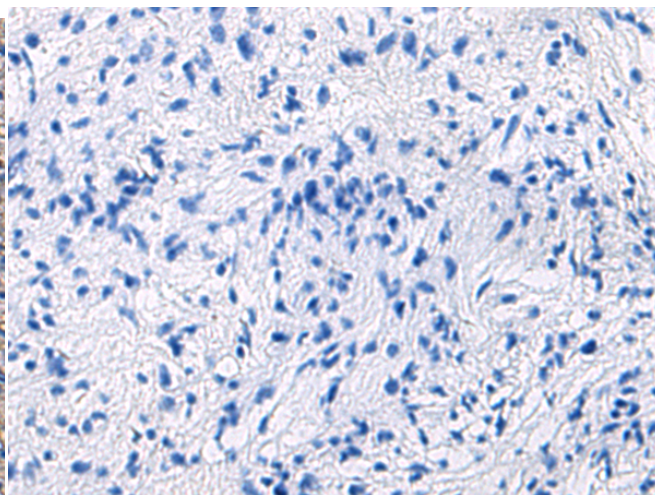
成分: PBS (without Mg<sup>2+</sup> and Ca<sup>2+</sup>), pH 7.4, 150 mM NaCl, 0.05% Sodium Azide and 40% glycerol

研究领域: Immunology

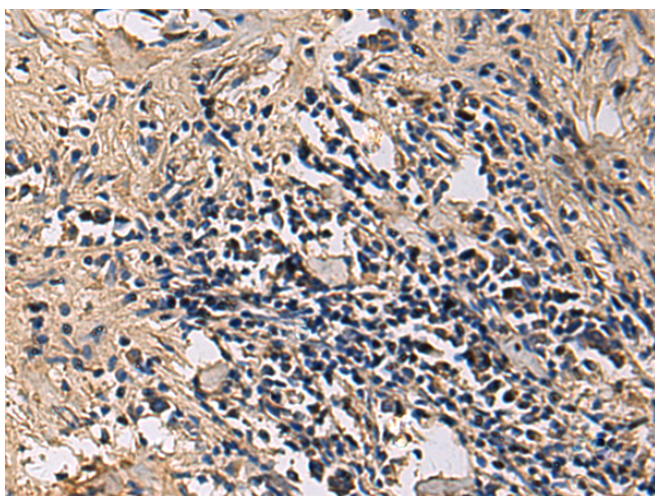
储存和运输: Store at -20°C. Avoid repeated freezing and thawing



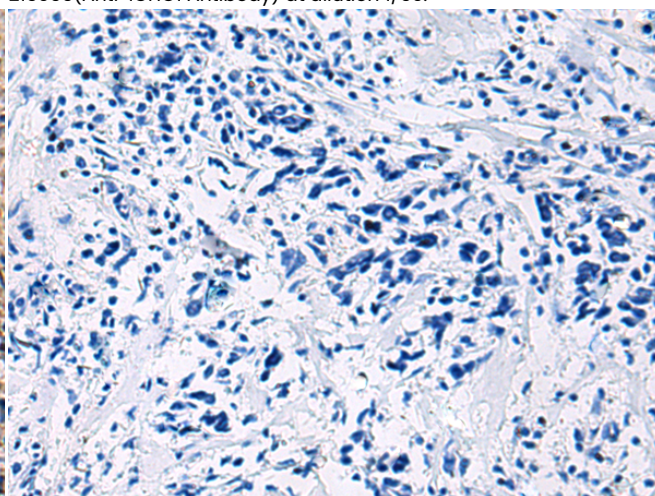
Immunohistochemistry analysis of paraffin embedded Human brain using 216066(IGHG1 Antibody) at a dilution of 1/60(Secreted).



In comparison with the IHC on the left, the same paraffin-embedded Human brain is first treated with the synthetic peptide and then with 216066(Anti-IGHG1 Antibody) at dilution 1/60.



The image on the left is immunohistochemistry of paraffin-embedded Human breast cancer using 216066(Anti-IGHG1 Antibody) at a dilution of 1/60.



In comparison with the IHC on the left, the same paraffin-embedded Human breast cancer is first treated with synthetic peptide and then with D164356(Anti-IGHG1 Antibody) at dilution 1/60.



# Product Description

Pioneering GTPase and Oncogene Product Development since 2010

---