

IGFBP7 RABBIT PAB

货号: S219861

产品全名: IGFBP7 兔多抗

基因符号 AGM; PSF; TAF; FSTL2; IBP-7; MAC25; IGFBP-7; RAMSVPS; IGFBP-7v; IGFBPRP1

UNIPROT ID: Q16270 (Gene Accession - NP_001544)

背景: This gene encodes a member of the insulin-like growth factor (IGF)-binding protein (IGFBP) family. IGFBPs bind IGFs with high affinity, and regulate IGF availability in body fluids and tissues and modulate IGF binding to its receptors. This protein binds IGF-I and IGF-II with relatively low affinity, and belongs to a subfamily of low-affinity IGFBPs. It also stimulates prostacyclin production and cell adhesion. Alternatively spliced transcript variants encoding different isoforms have been described for this gene, and one variant has been associated with retinal arterial macroaneurysm (PMID:21835307). [provided by RefSeq, Dec 2011]

抗原: Synthetic peptide of human IGFBP7

经过测试的应用: ELISA, WB, IHC

推荐稀释比: IHC: 50-100;WB: 500-2000;ELISA: 5000-10000

种属反应性: Rabbit

克隆性: Rabbit Polyclonal

亚型: Immunogen-specific rabbit IgG

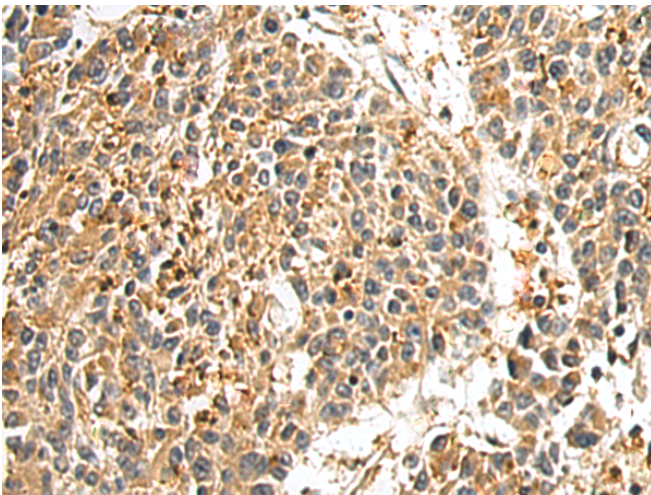
纯化: Antigen affinity purification

种属反应性: Human, Mouse

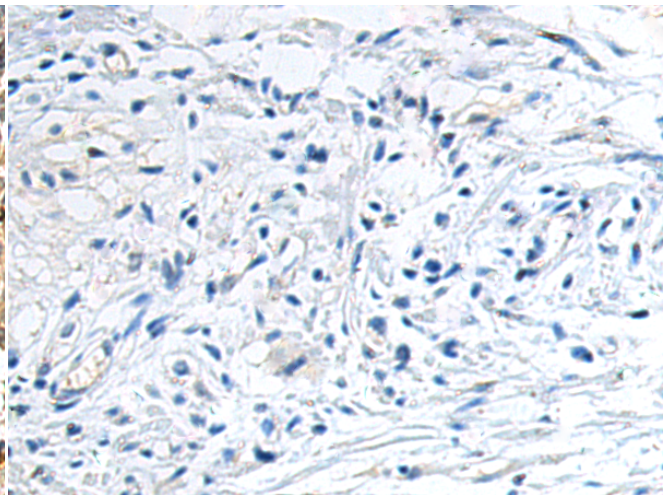
成分: PBS (without Mg²⁺ and Ca²⁺), pH 7.4, 150 mM NaCl, 0.05% Sodium Azide and 40% glycerol

研究领域: Signal Transduction, Cancer

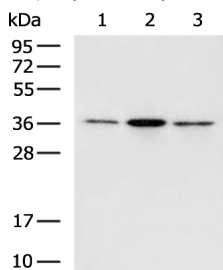
储存和运输: Store at -20°C. Avoid repeated freezing and thawing



Immunohistochemistry analysis of paraffin embedded Human colorectal cancer tissue using 219861(IGFBP7 Antibody) at a dilution of 1/25 (Secreted).



In comparison with the IHC on the left, the same paraffin-embedded Human colorectal cancer tissue is first treated with the synthetic peptide and then with 219861(Anti-IGFBP7 Antibody) at dilution 1/25.



Gel: 12%SDS-PAGE, Lysate: 40 µg;

Lane 1-3: Human cerebella tissue, HT-29 and 231 cell lysates;

Primary antibody: 219861(IGFBP7 Antibody) at dilution 1/600;

Secondary antibody: HRP-conjugated Goat anti rabbit IgG at 1/5000 dilution;

Exposure time: 40 seconds