

IGFBP7 RABBIT MAB

货号: N262391

产品全名: IGFBP7 兔单克隆抗体

基因符号 IGFBP7; MAC25; PSF; Insulin-like growth factor-binding protein 7; IBP-7; IGF-binding protein 7; IGFBP-7; IGFBP-rP1; MAC25 protein; PGI2-stimulating factor; Prostacyclin-stimulating factor; Tumor-derived adhesion factor; TAF

UNIPROT ID: Q16270

背景: Binds IGF-I and IGF-II with a relatively low affinity. Stimulates prostacyclin (PGI₂) production. Stimulates cell adhesion.

抗原: A synthetic peptide of human IGFBP7

经过测试的应用: WB,IHC-F,IHC-P,ICC/IF

推荐稀释比: WB: 1/500-1/1000 IHC: 1/50-1/100 IF: 1/50-1/200

种属反应性: Rabbit

克隆性: Rabbit Monoclonal

克隆编号: R04-5D9

分子量: Calculated MW: 29 kDa; Observed MW: 29 kDa

亚型: IgG

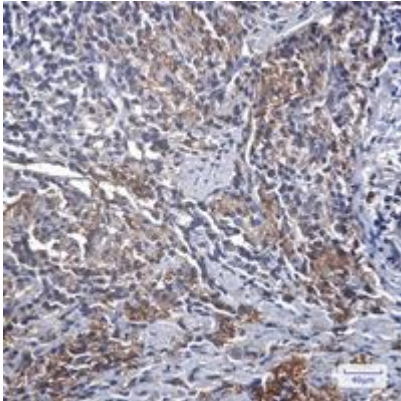
纯化: Affinity Purified

种属反应性: Human, Mouse and Rat

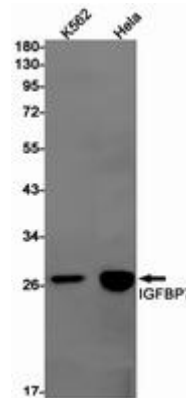
成分: PBS (without Mg²⁺ and Ca²⁺), pH 7.3 containing 50% glycerol, 0.5% BSA and 0.02% sodium azide

研究领域: Signal Transduction

储存和运输: Store at -20°C. Avoid repeated freezing and thawing



Immunohistochemistry analysis of paraffin-embedded Human lung cancer using IGFBP7 antibody. High-pressure and temperature Sodium Citrate pH 6.0 was used for antigen retrieval.



Western blot analysis of IGFBP7 in K562, HeLa lysates using IGFBP7 antibody.