

IGF2BP3 RABBIT PAB

货号: S210378

产品全名: IGF2BP3 兔多抗

基因符号: KOC; CT98; IMP3; KOC1; IMP-3; VICKZ3

UNIPROT ID: O00425 (Gene Accession - BC065269)

背景: The protein encoded by this gene is primarily found in the nucleolus, where it can bind to the 5' UTR of the insulin-like growth factor II leader 3 mRNA and may repress translation of insulin-like growth factor II during late development. The encoded protein contains several KH domains, which are important in RNA binding and are known to be involved in RNA synthesis and metabolism. A pseudogene exists on chromosome 7, and there are putative pseudogenes on other chromosomes.

抗原: Fusion protein of human IGF2BP3

经过测试的应用: ELISA, WB, IHC

推荐稀释比: IHC: 100-200; WB: 500-2000; ELISA: 5000-10000

种属反应性: Rabbit

克隆性: Rabbit Polyclonal

亚型: Immunogen-specific rabbit IgG

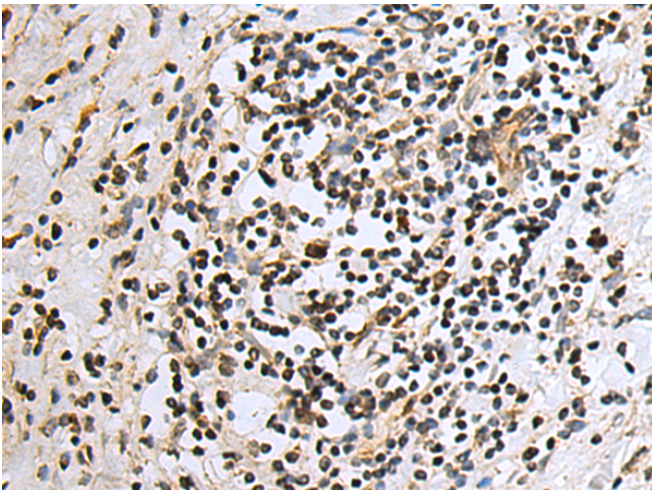
纯化: Antigen affinity purification

种属反应性: Human, Mouse

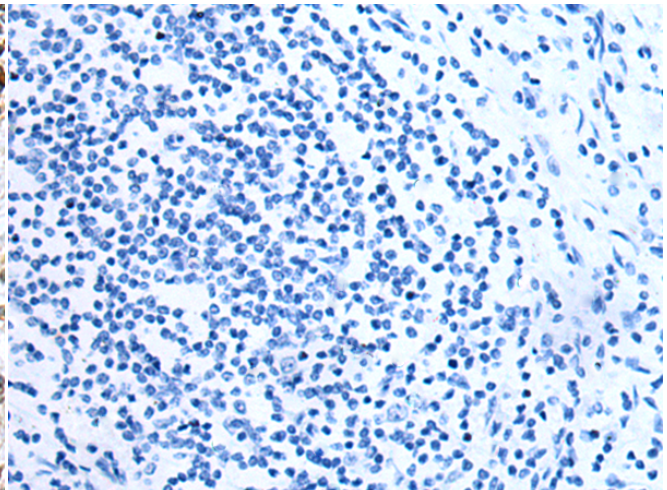
成分: PBS (without Mg²⁺ and Ca²⁺), pH 7.4, 150 mM NaCl, 0.05% Sodium Azide and 40% glycerol

研究领域: Epigenetics and Nuclear Signaling, Cancer

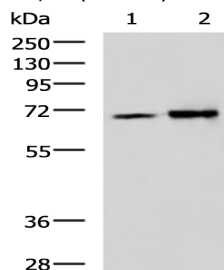
储存和运输: Store at -20°C. Avoid repeated freezing and thawing



Immunohistochemistry analysis of paraffin embedded Human colorectal cancer tissue using 210378 (IGF2BP3 Antibody) at a dilution of 1/100 (Nucleus).



In comparison with the IHC on the left, the same paraffin-embedded Human colorectal cancer tissue is first treated with the fusion protein and then with 210378 (Anti-IGF2BP3 Antibody) at dilution 1/100.



Gel: 8% SDS-PAGE, Lysate: 40 µg;

Lane 1-2: Jurkat and K562 cell lysates;

Primary antibody: 210378 (IGF2BP3 Antibody) at dilution 1/700;

Secondary antibody: HRP-conjugated Goat anti rabbit IgG at 1/5000 dilution;

Exposure time: 30 seconds