

IFT22 RABBIT PAB

货号: S218996

产品全名: IFT22 兔多抗

基因符号 RABL5

UNIPROT ID: Q9H7X7 (Gene Accession - BC009823)

背景: Small GTPase-like component of the intraflagellar transport (IFT) complex B.

抗原: Fusion protein of human IFT22

经过测试的应用: ELISA, WB, IHC

推荐稀释比: IHC: 50-300;WB: 200-1000;ELISA: 5000-10000

种属反应性: Rabbit

克隆性: Rabbit Polyclonal

亚型: Immunogen-specific rabbit IgG

纯化: Antigen affinity purification

种属反应性: Human, Mouse, Rat

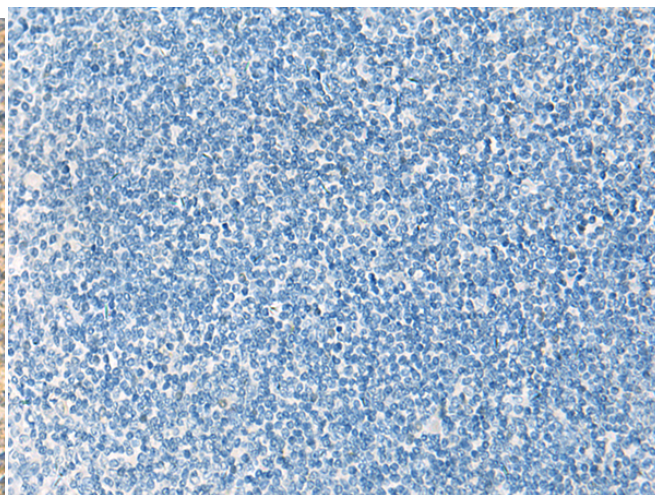
成分: PBS (without Mg²⁺ and Ca²⁺), pH 7.4, 150 mM NaCl, 0.05% Sodium Azide and 40% glycerol

研究领域: Signal Transduction

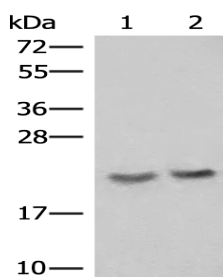
储存和运输: Store at -20°C. Avoid repeated freezing and thawing



Immunohistochemistry analysis of paraffin embedded Human tonsil tissue using 218996(IFT22 Antibody) at a dilution of 1/50(Cytoplasm).



In comparison with the IHC on the left, the same paraffin-embedded Human tonsil tissue is first treated with the fusion protein and then with 218996(Anti-IFT22 Antibody) at dilution 1/50.



Gel: 12%SDS-PAGE, Lysate: 40 µg;

Lane 1-2: A172, A549 cell lysates;

Primary antibody: 218996(IFT22 Antibody) at dilution 1/250;

Secondary antibody: Goat anti rabbit IgG at 1/8000 dilution;

Exposure time: 1 minute