

## IFNG RABBIT PAB

货号: S210375

产品全名: IFNG 兔多抗

基因符号 IFG; IFI; IMD69

**UNIPROT ID:** P01579 (Gene Accession - BC070256 )

**背景:** This gene encodes a soluble cytokine that is a member of the type II interferon class. The encoded protein is secreted by cells of both the innate and adaptive immune systems. The active protein is a homodimer that binds to the interferon gamma receptor which triggers a cellular response to viral and microbial infections. Mutations in this gene are associated with an increased susceptibility to viral, bacterial and parasitic infections and to several autoimmune diseases. [provided by RefSeq, Dec 2015]

**抗原:** Fusion protein of human IFNG

**经过测试的应用:** ELISA, IHC

**推荐稀释比:** IHC: 50-200; ELISA: 5000-10000

**种属反应性:** Rabbit

**克隆性:** Rabbit Polyclonal

**亚型:** Immunogen-specific rabbit IgG

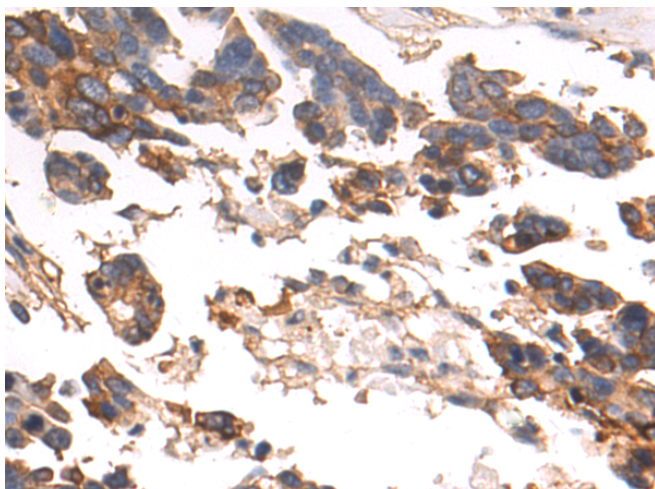
**纯化:** Antigen affinity purification

**种属反应性:** Human

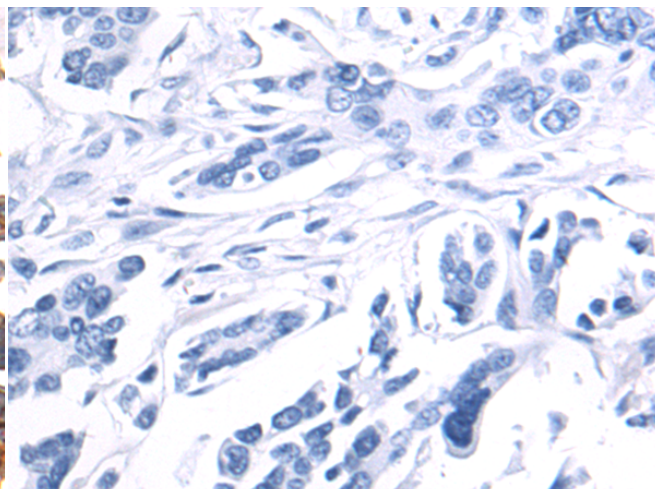
**成分:** PBS (without Mg<sup>2+</sup> and Ca<sup>2+</sup>), pH 7.4, 150 mM NaCl, 0.05% Sodium Azide and 40% glycerol

**研究领域:** Immunology, Stem Cells, Cancer

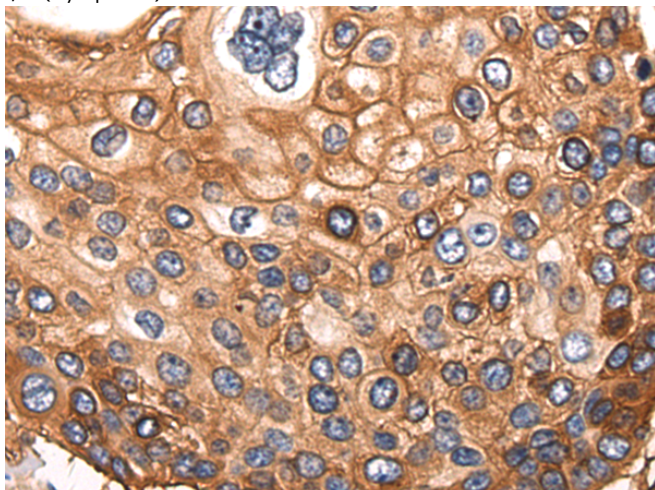
**储存和运输:** Store at -20°C. Avoid repeated freezing and thawing



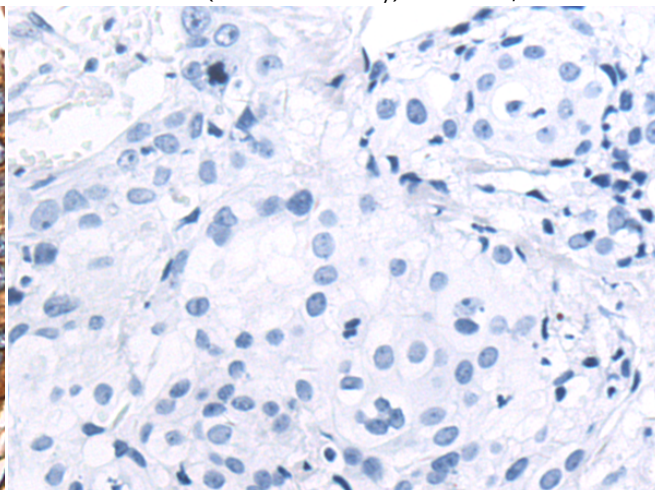
Immunohistochemistry analysis of paraffin embedded Human colorectal cancer tissue using 210375(IFNG Antibody) at a dilution of 1/75(Cytoplasm).



In comparison with the IHC on the left, the same paraffin-embedded Human colorectal cancer tissue is first treated with the fusion protein and then with 210375(Anti-IFNG Antibody) at dilution 1/75.



The image on the left is immunohistochemistry of paraffin-embedded Human cervical cancer tissue using 210375(Anti-IFNG Antibody) at a dilution of 1/75.



In comparison with the IHC on the left, the same paraffin-embedded Human cervical cancer tissue is first treated with fusion protein and then with D120806(Anti-IFNG Antibody) at dilution 1/75.



# Product Description

Pioneering GTPase and Oncogene Product Development since 2010

---