

IFNA13 RABBIT PAB

货号: S218714

产品全名: IFNA13 兔多抗

基因符号

UNIPROT ID: P01562 (Gene Accession - ??)

背景: Predicted to enable cytokine activity and type I interferon receptor binding activity. Predicted to be involved in several processes, including B cell activation; lymphocyte activation involved in immune response; and positive regulation of peptidyl-serine phosphorylation of STAT protein. Predicted to be located in extracellular region. Predicted to be active in extracellular space.

抗原: Fusion protein of human IFNA13

经过测试的应用: ELISA, WB, IHC

推荐稀释比: IHC: 50-200;WB: 1000-5000;ELISA: 5000-10000

种属反应性: Rabbit

克隆性: Rabbit Polyclonal

亚型: Immunogen-specific rabbit IgG

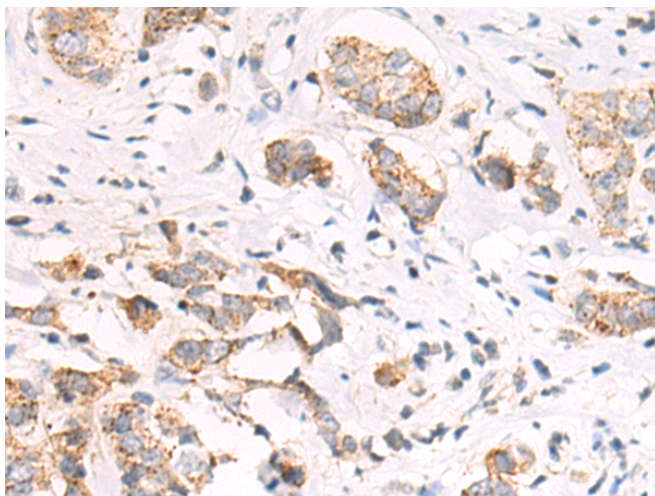
纯化: Antigen affinity purification

种属反应性: Human, Mouse

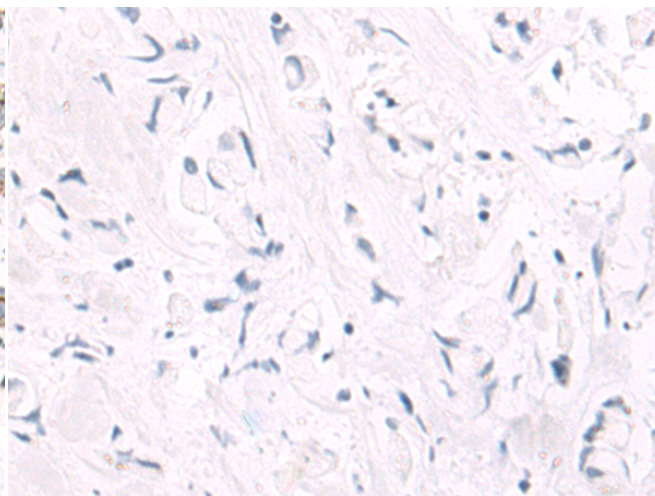
成分: PBS (without Mg²⁺ and Ca²⁺), pH 7.4, 150 mM NaCl, 0.05% Sodium Azide and 40% glycerol

研究领域: Immunology, Cancer, Neuroscience

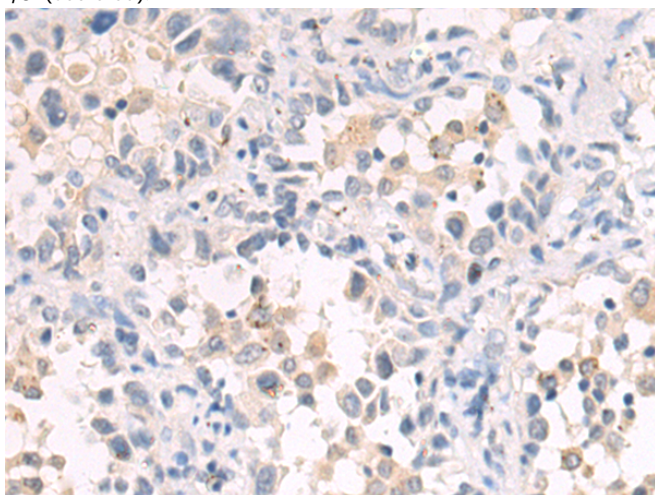
储存和运输: Store at -20°C. Avoid repeated freezing and thawing



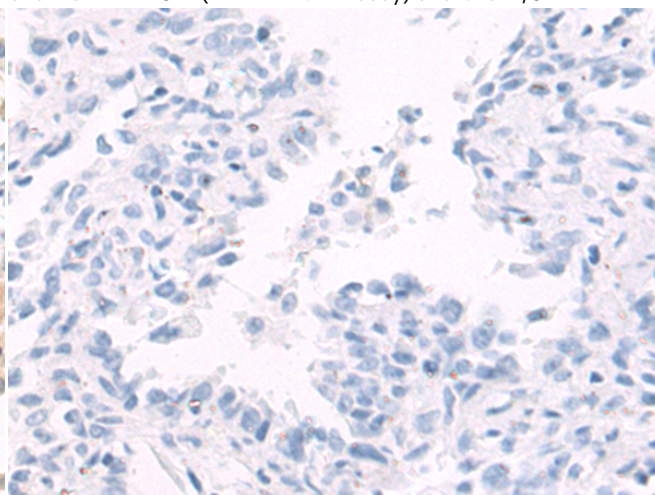
Immunohistochemistry analysis of paraffin embedded Human breast cancer tissue using 218714(IFNA13 Antibody) at a dilution of 1/80 (Secreted).



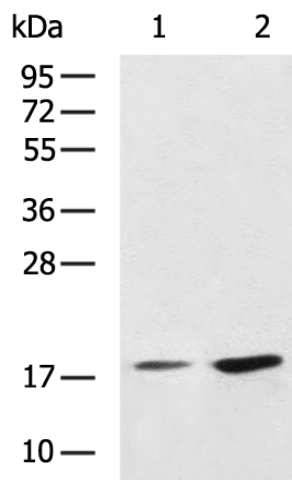
In comparison with the IHC on the left, the same paraffin-embedded Human breast cancer tissue is first treated with the fusion protein and then with 218714(Anti-IFNA13 Antibody) at dilution 1/80.



The image on the left is immunohistochemistry of paraffin-embedded Human thyroid cancer tissue using 218714(Anti-IFNA13 Antibody) at a dilution of 1/80.



In comparison with the IHC on the left, the same paraffin-embedded Human thyroid cancer tissue is first treated with fusion protein and then with D225047(Anti-IFNA13 Antibody) at dilution 1/80.



Gel: 12%SDS-PAGE, Lysate: 40 µg;
 Lane 1-2: Mouse fetal liver tissue, 293T cell lysates;
 Primary antibody: 218714(IFNA13 Antibody) at dilution 1/1200;
 Secondary antibody: HRP-conjugated Goat anti rabbit IgG at 1/5000 dilution;
 Exposure time: 30 seconds



Product Description

Pioneering GTPase and Oncogene Product Development since 2010
